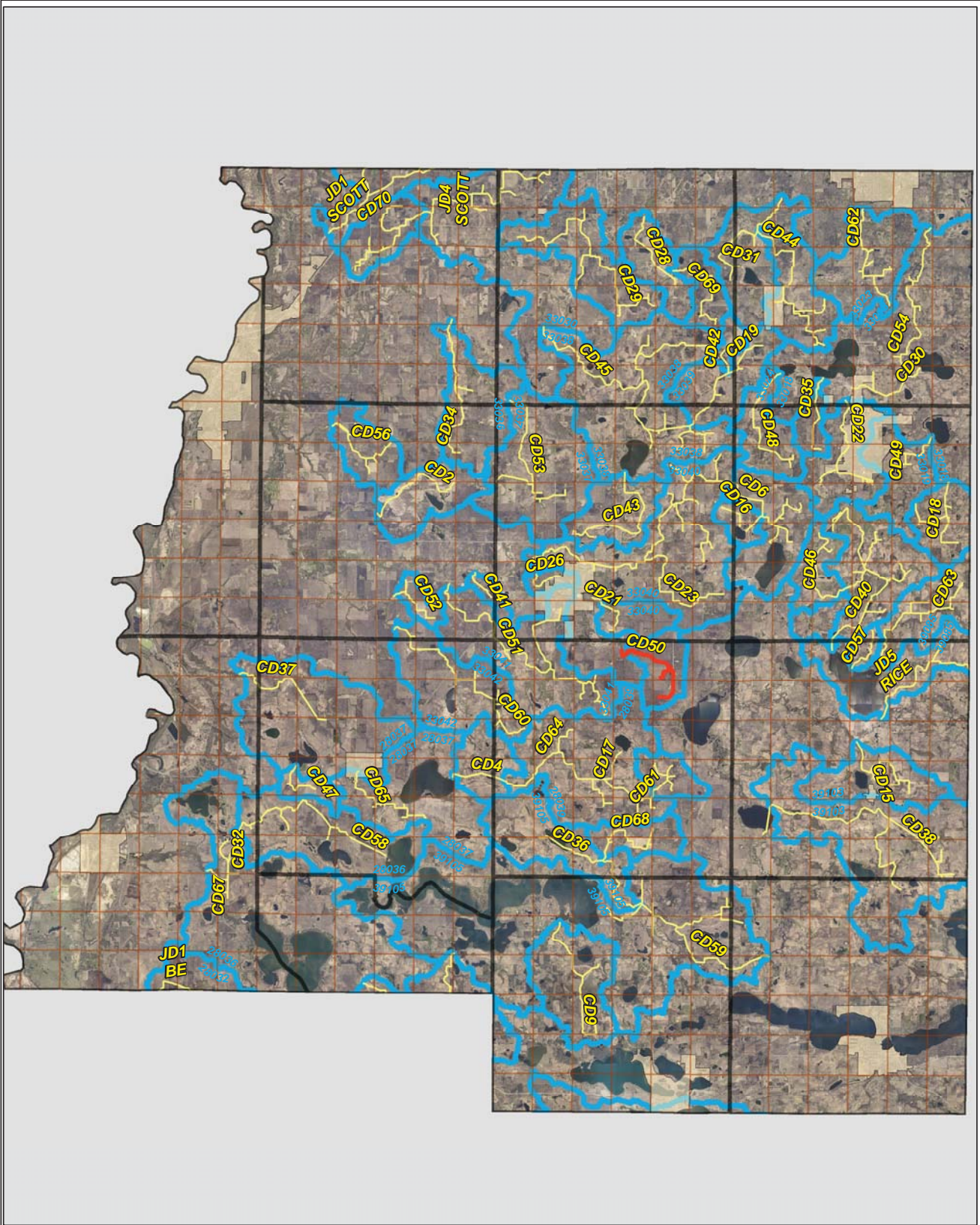
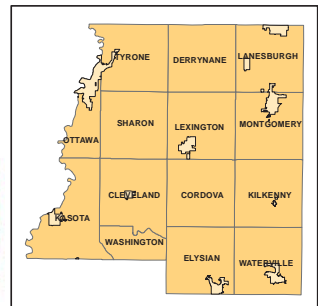
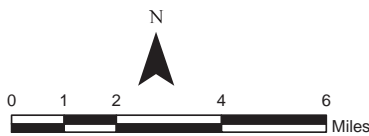


CD 50

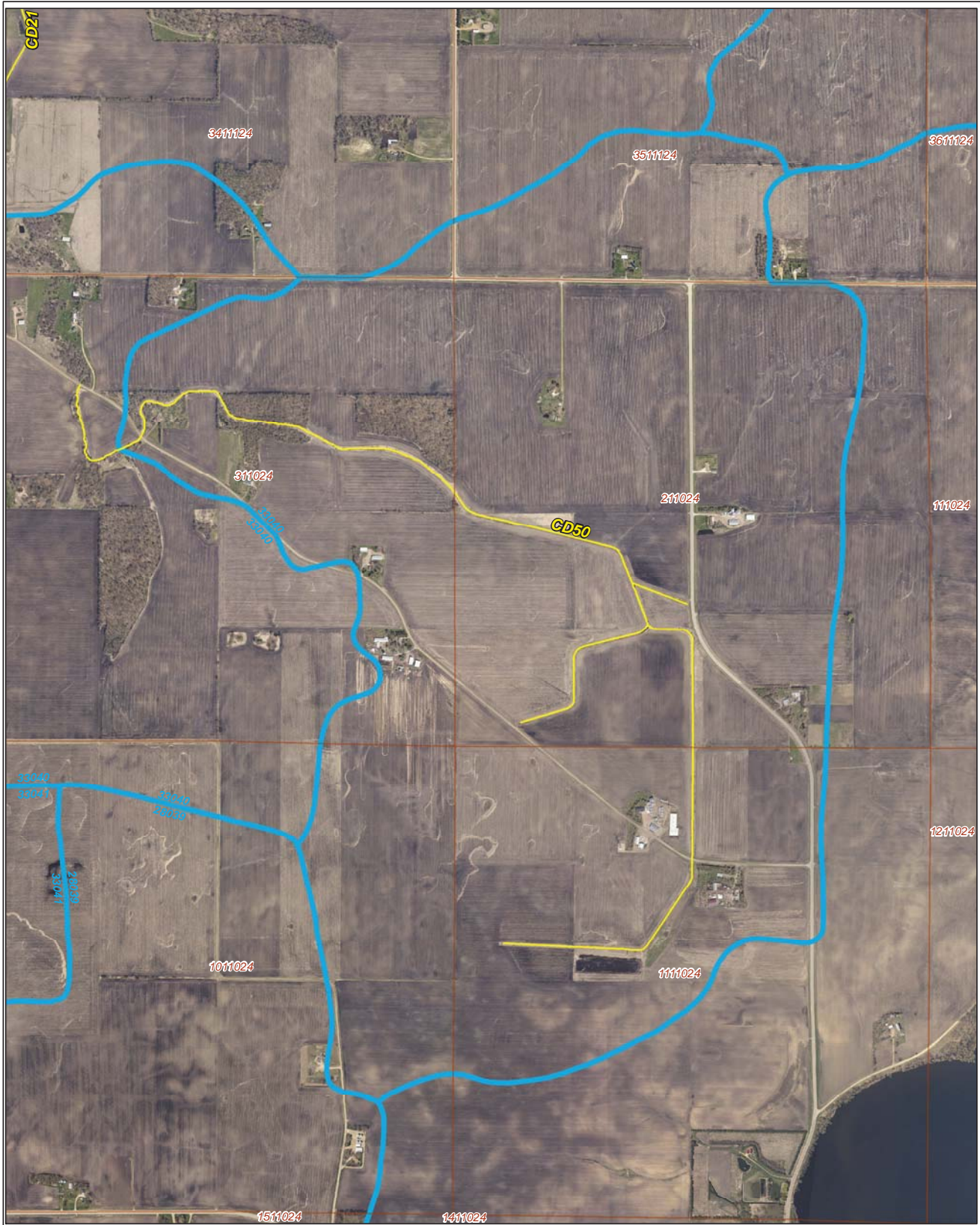


Legend

- Sections
- Cities
- Ditches**
-
-
- Ditch Watershed



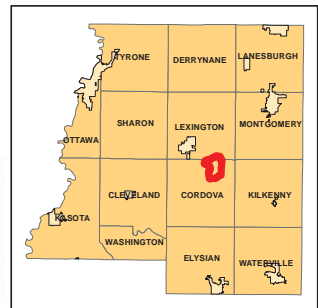
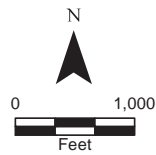
Ditch Watershed



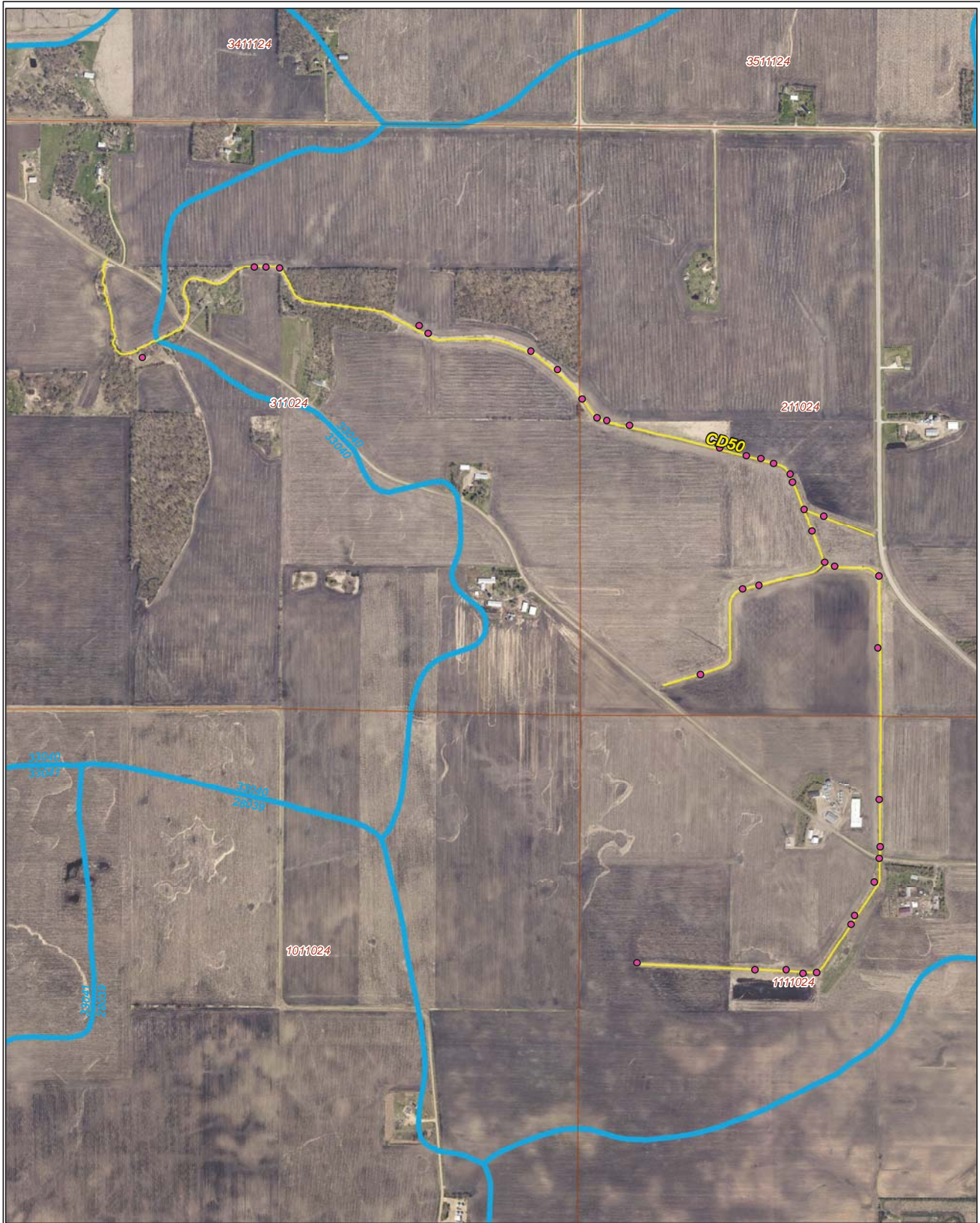
Legend

- Sections
- Cities
- Ditches
- Ditch Watershed

Ditch ID: 33040CD50
Acres: 1341.57



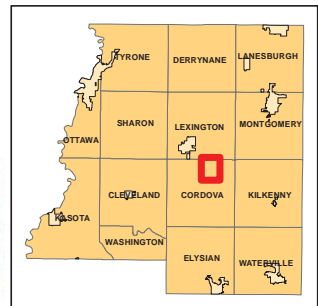
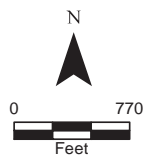
2006 Ditch Inventory



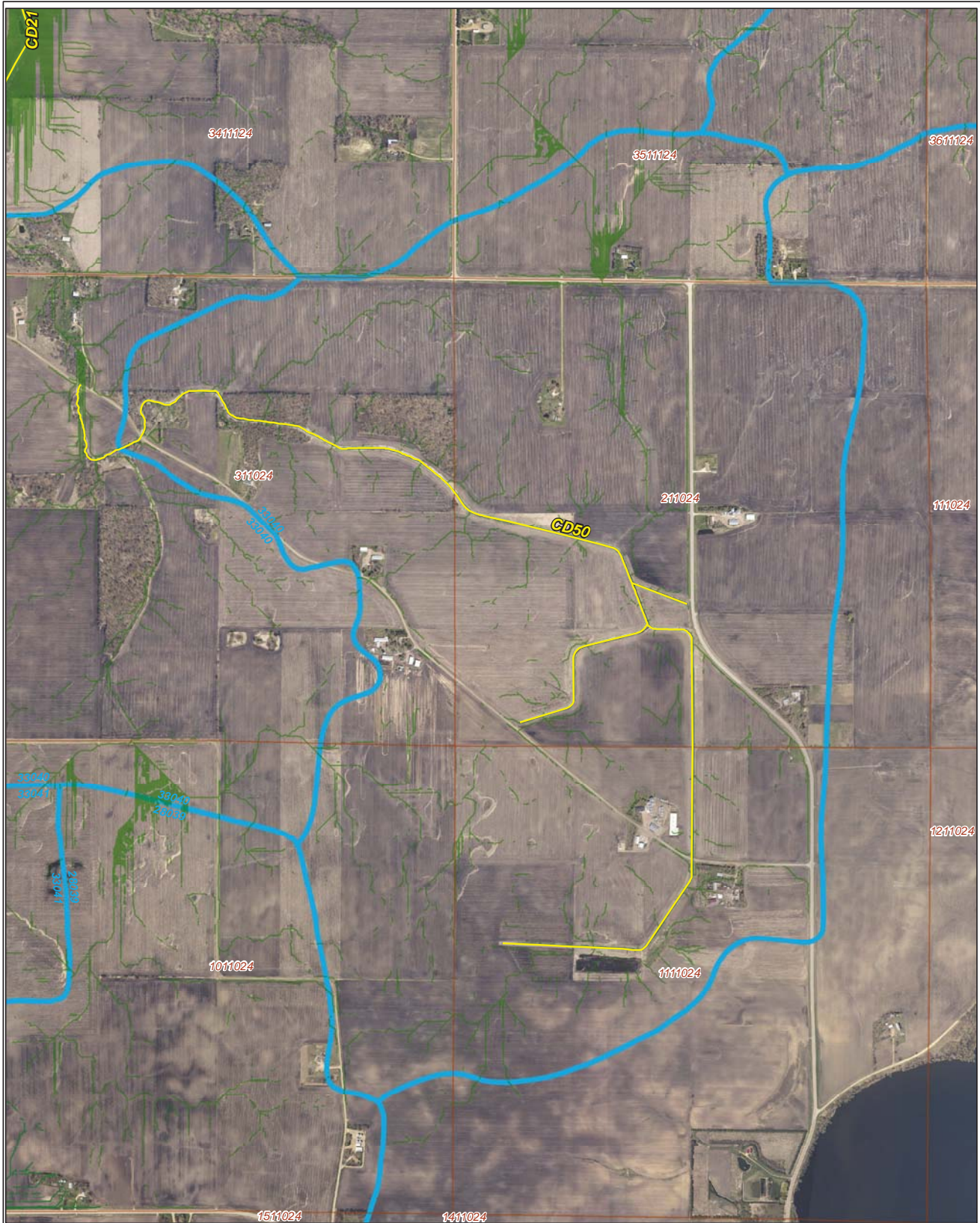
Legend

- Ditch Inventory
- Sections
- Cities
- Ditches
- Ditch Watershed






Ditch Name: CD50



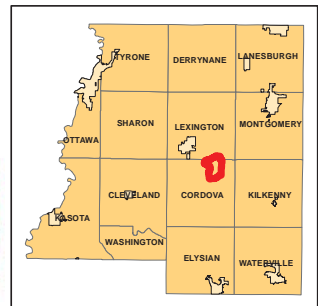
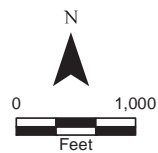
High Priority - Stream Power Index Sites



Legend

-  Sediment
-  Ditches
-  Sections
-  Cities
-  Ditch Watershed

Ditch Name: CD50



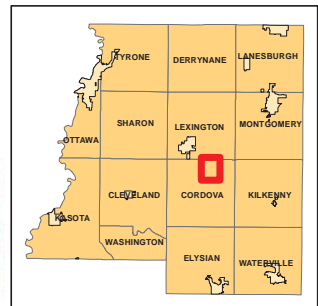
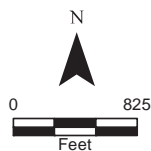
DNR Public Waters



Ditch Name: CD50

Legend

- DNR Public Lakes and Basins
- DNR Rivers and Streams
- Sections
- Cities
- Ditches
- Ditch Watershed

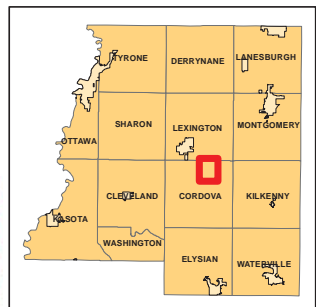
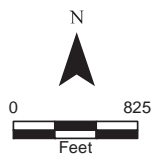


2015 Wetland Inventory

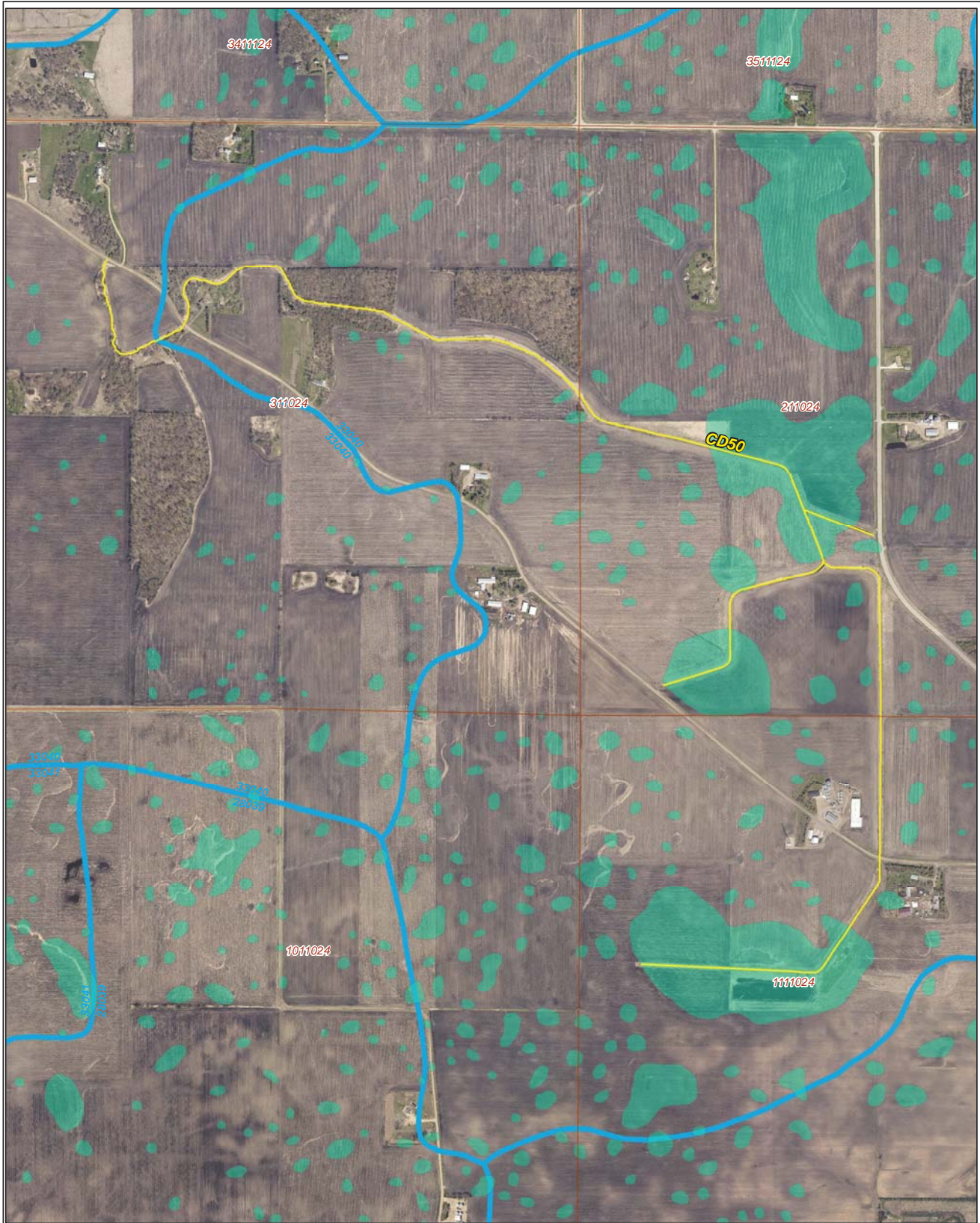


Ditch Name: CD50

Legend	
Wetland Type	
	Freshwater Emergent Wetland
	Freshwater Forested/Shrub Wetland
	Freshwater Pond
	Lake
	Riverine
	Sections
	Ditches
	Ditch Watershed



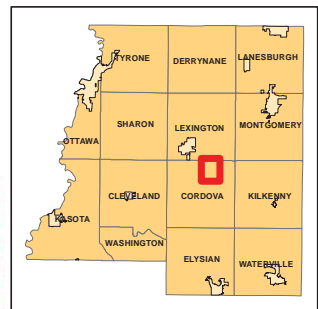
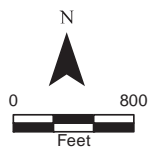
Restorable Wetlands



Ditch Name: CD50

Legend






- Retention Locations
- Sections
- Cities
- Ditches
- Ditch Watershed



Ditch Buffer



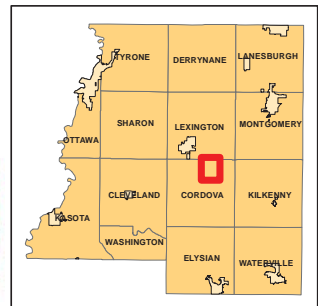
Legend

-  Ditches
-  Needs Buffer
-  Sections
-  Cities
-  Ditch Watershed

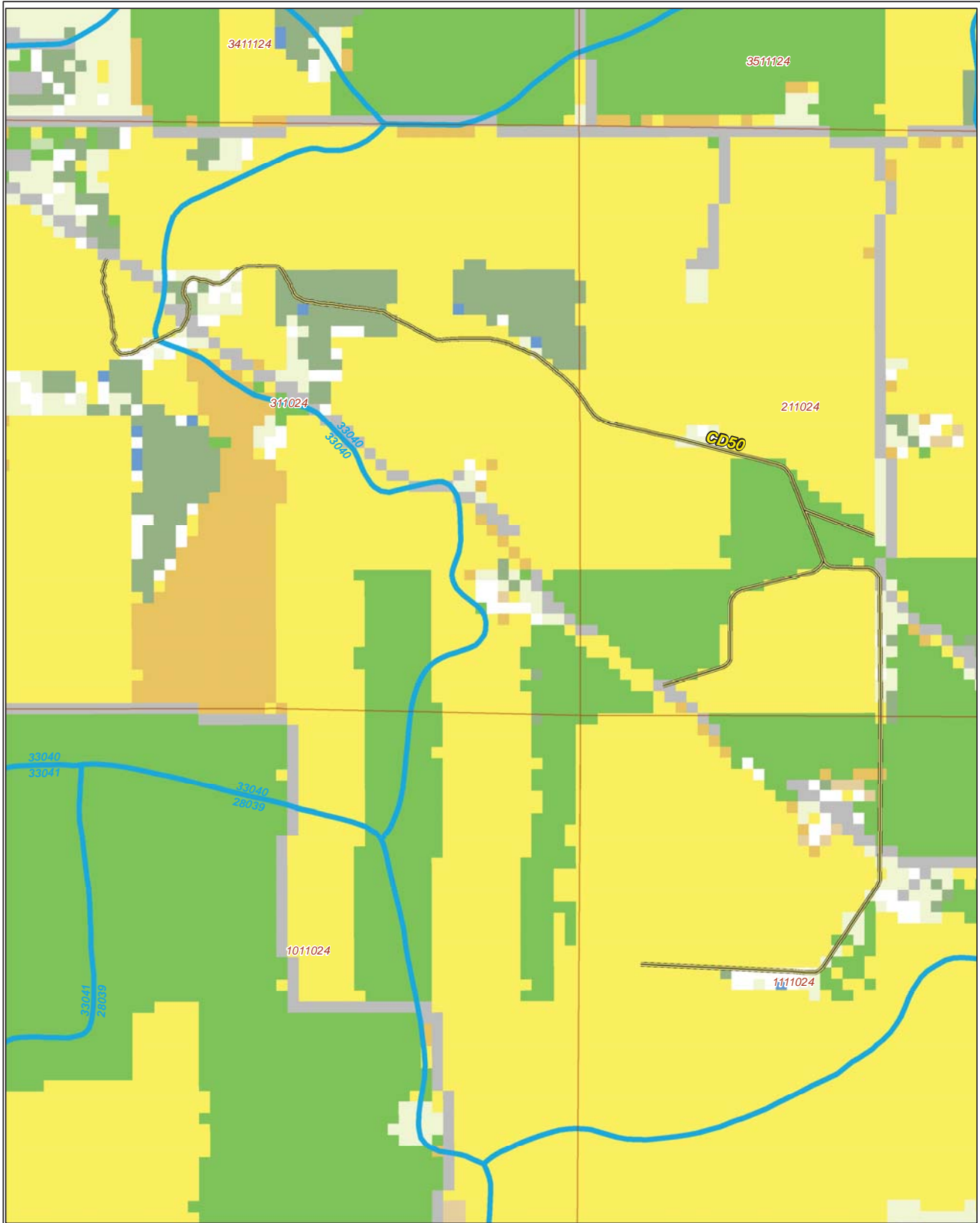
Ditch Name: CD50
Percent Buffered: 37.89%



N



2015 Crop Coverage



Ditch Name: CD50

Legend	
Coverage Type	
Open Water	Sections
Alfalfa	Cities
Corn	Ditches
Forest	Ditch Watershed
Developed Area	Other Hay/Non Alfalfa
Grass/Pasture	Peas
Soybeans	Spring Wheat
Sweet Corn	

