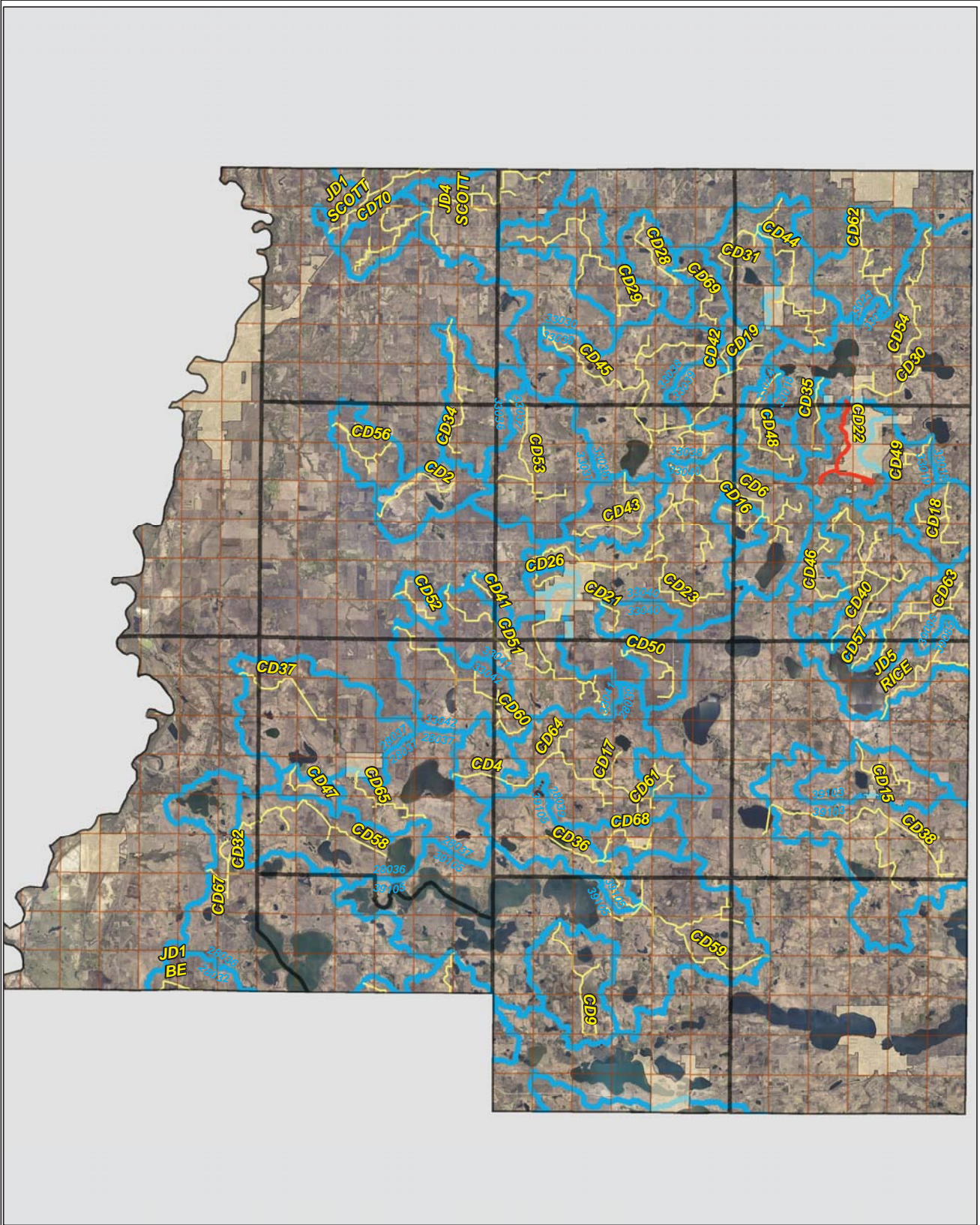
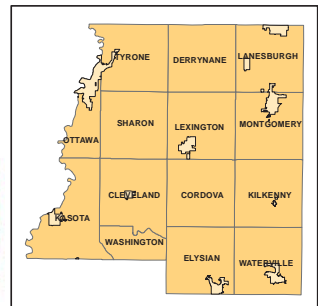
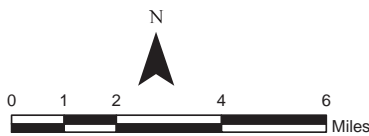


CD 22

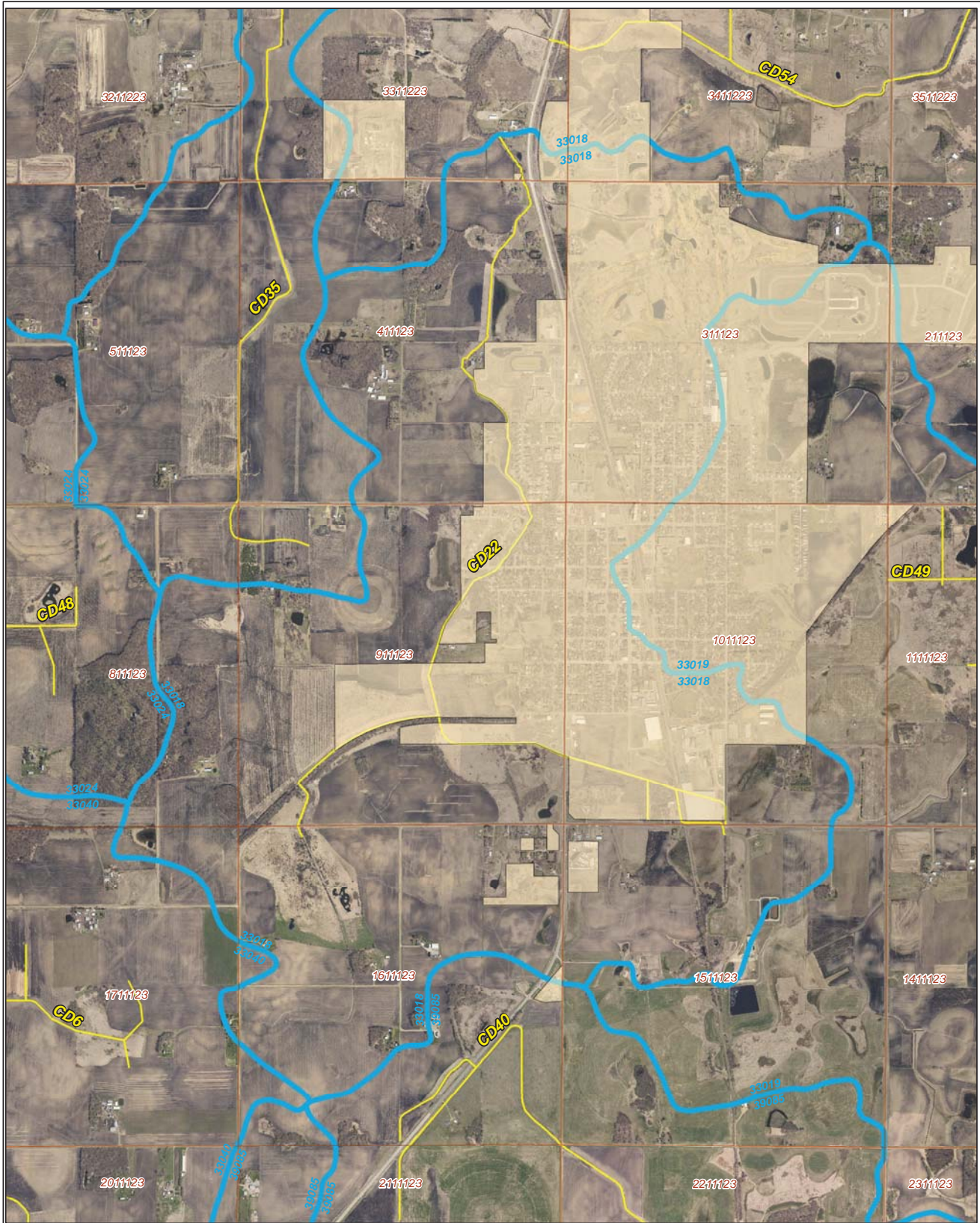


Legend





- Sections
- Cities
- Ditches**
-
-
- Ditch Watershed



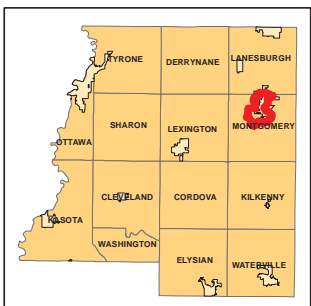
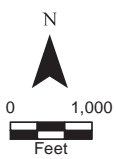
Ditch Watershed



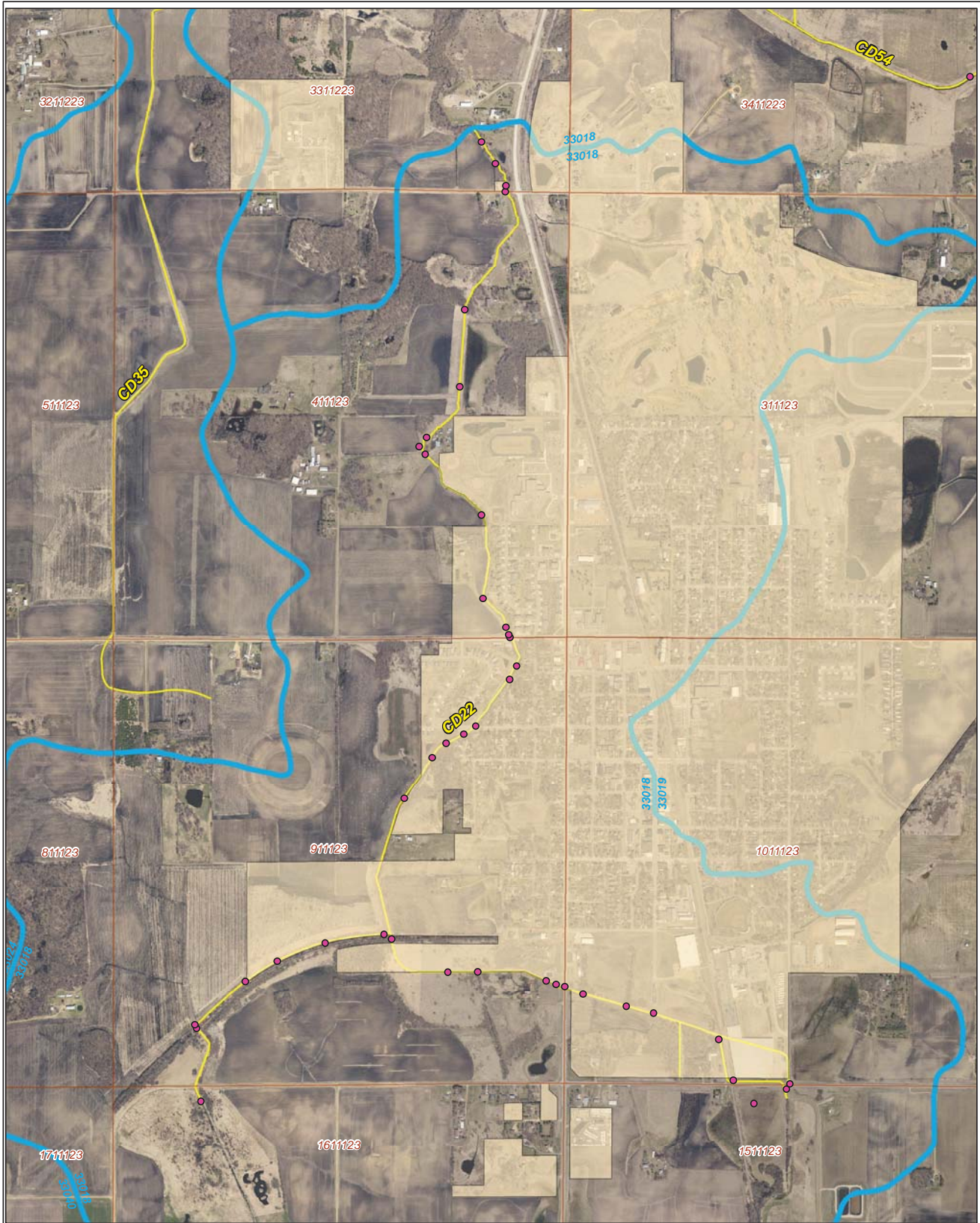
Legend

-  Sections
-  Cities
-  Ditches
-  Ditch Watershed

Ditch ID: 33018CD22
Acres: 2511.26



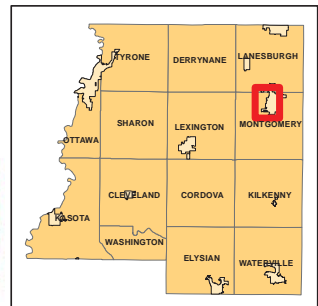
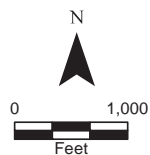
2006 Ditch Inventory



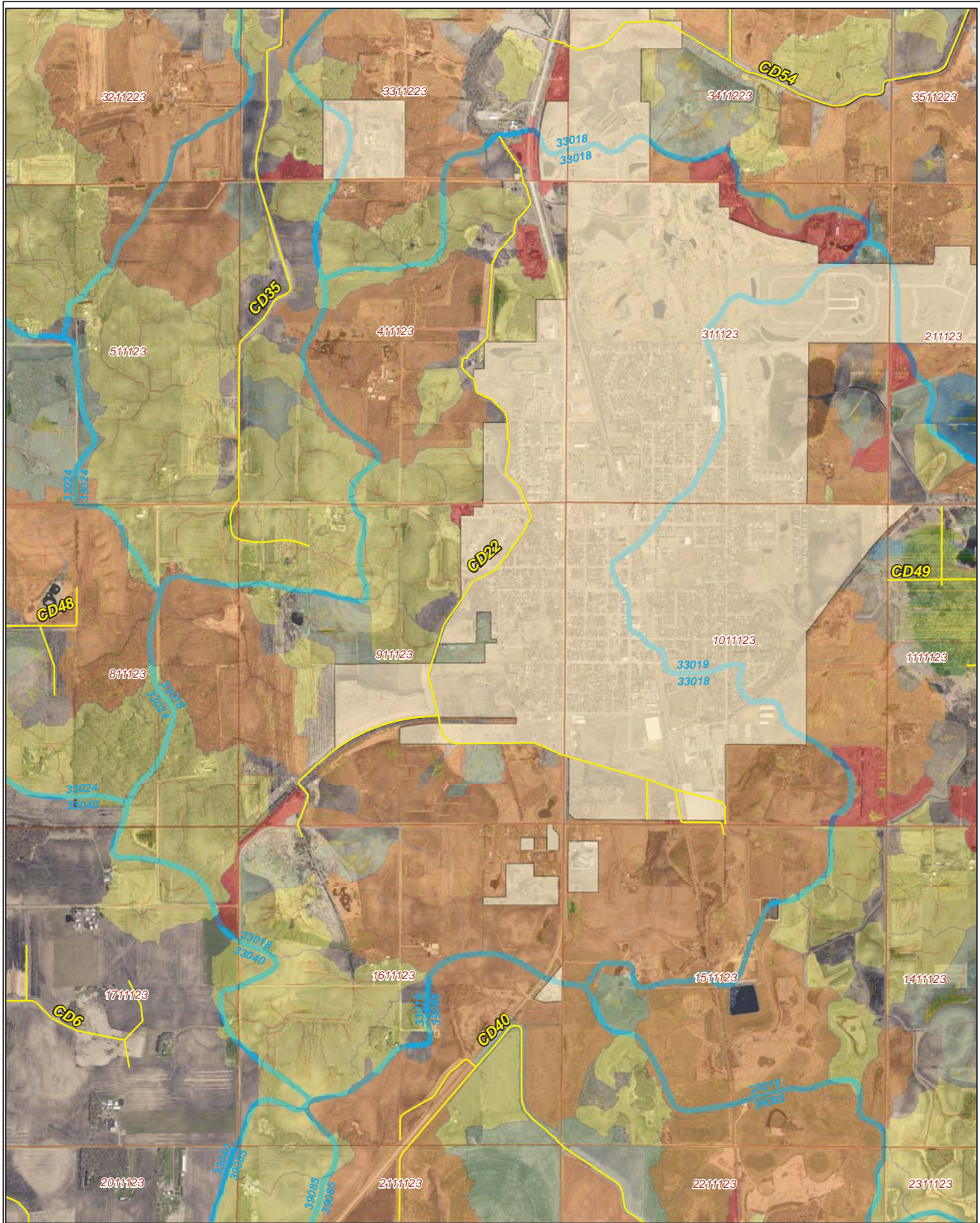
Legend

- Ditch Inventory
- Sections
- Cities
- Ditches
- Ditch Watershed

Ditch Name: CD22

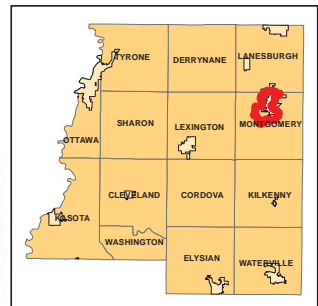
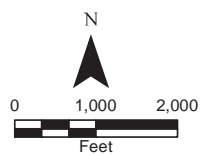


High Priority - Stream Power Index Sites

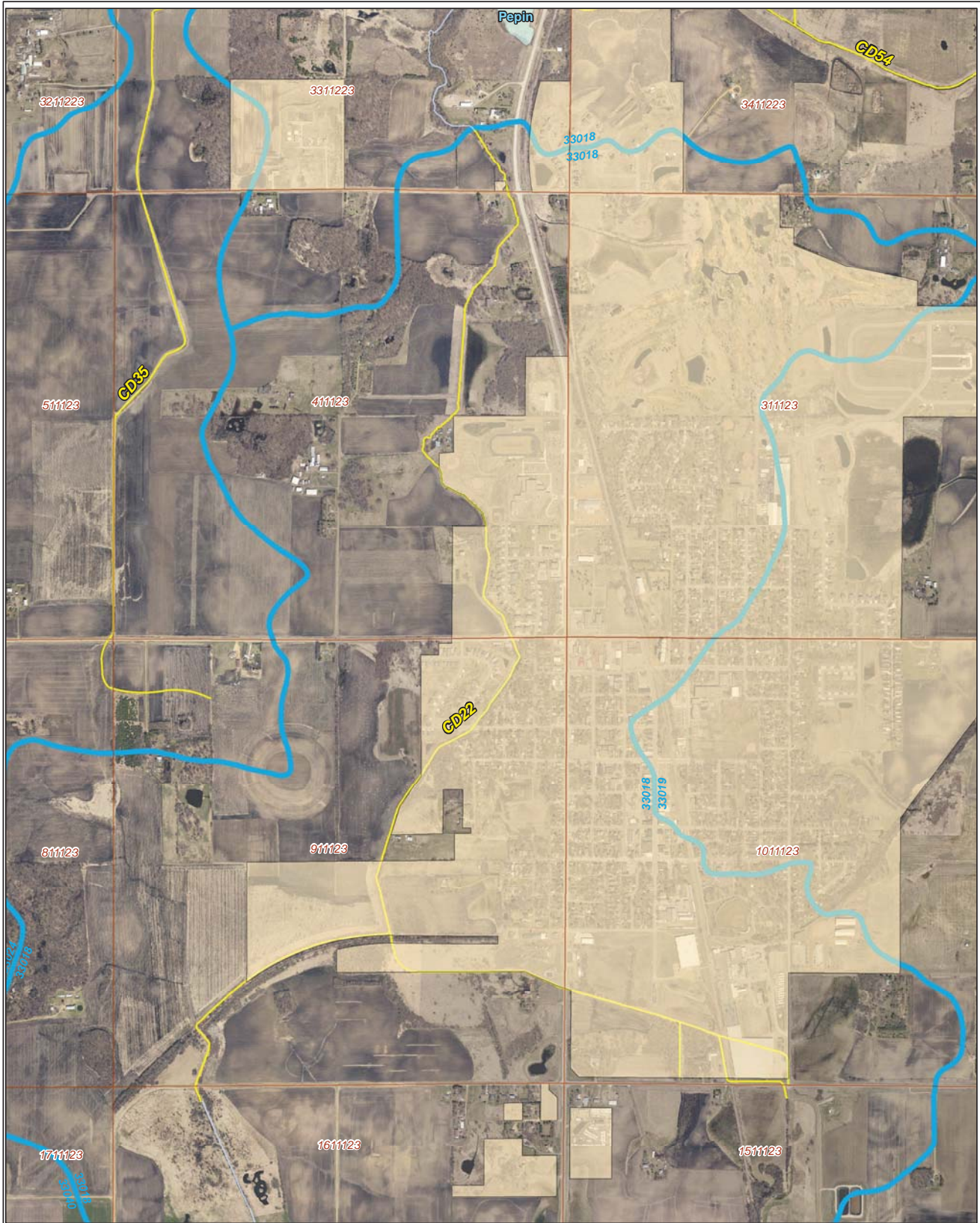


Ditch Name: CD22

Legend		
Mean SPI Rank	Combined Sediment and SPI Rank	Ditches
Low	Low	Sections
Low/Moderate	Low/Moderate	Cities
Moderate	Moderate	Ditch Watershed
High/Moderate	Moderate/High	
High	High	




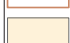
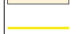



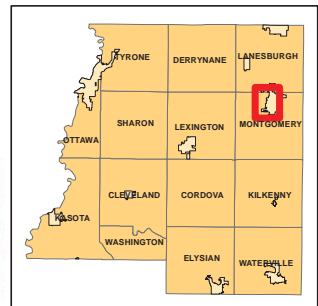
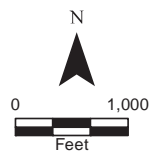
DNR Public Waters



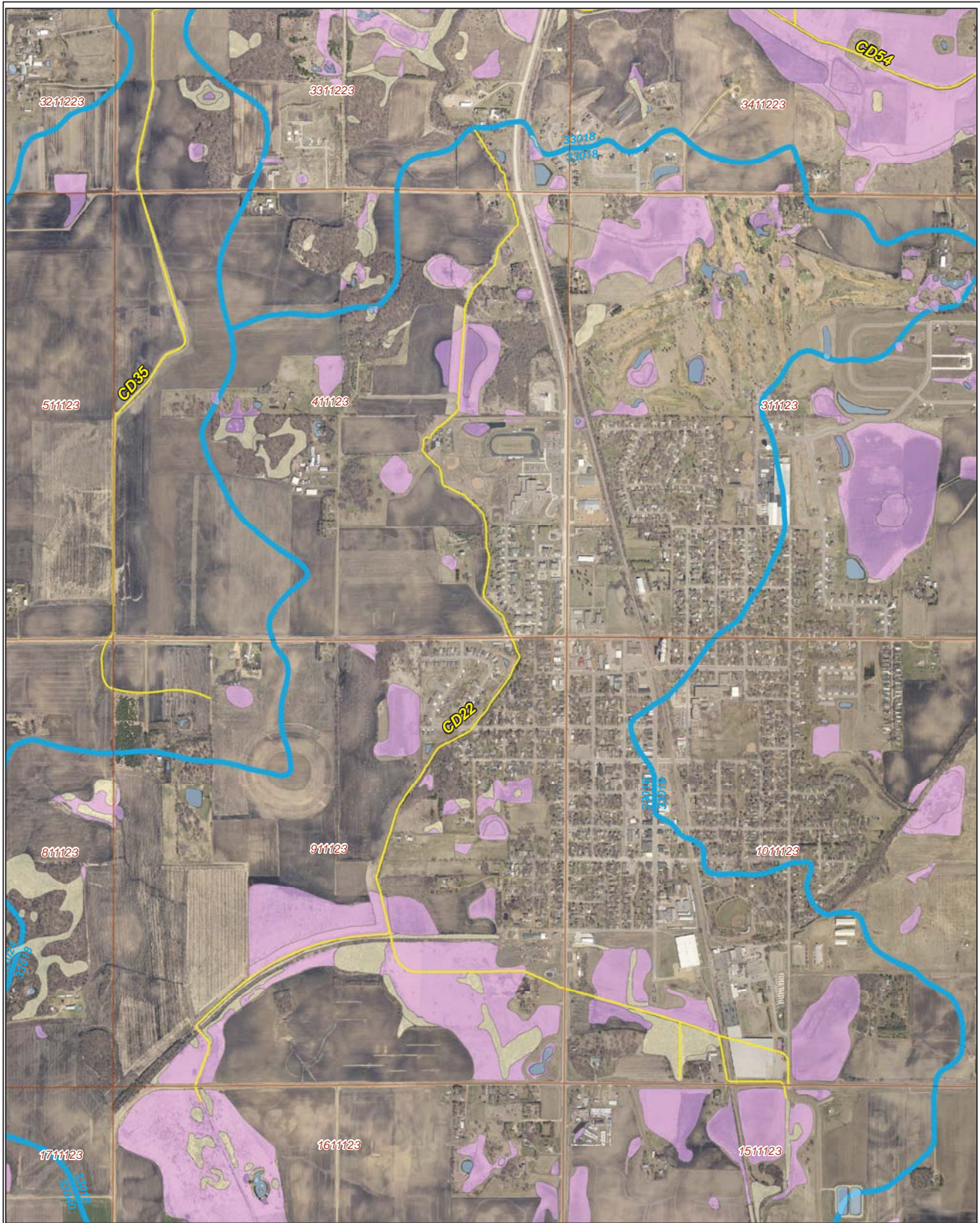
Ditch Name: CD22

Legend

-  DNR Public Lakes and Basins
-  DNR Rivers and Streams
-  Sections
-  Cities
-  Ditches
-  Ditch Watershed

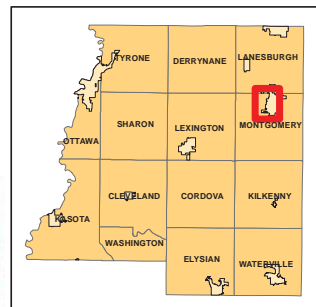
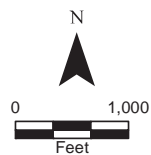


2015 Wetland Inventory

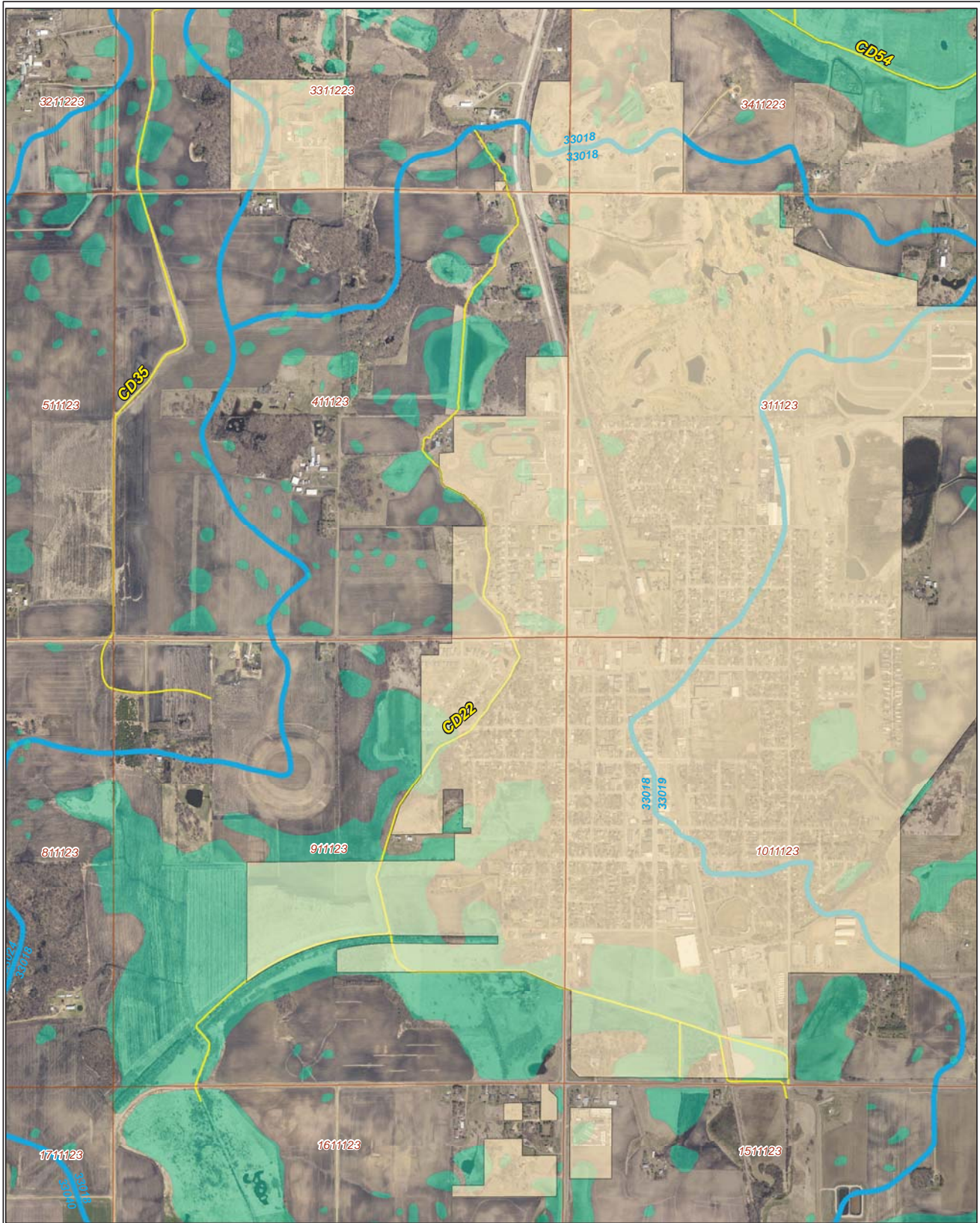


Ditch Name: CD22

Legend	
Wetland Type	
	Freshwater Emergent Wetland
	Freshwater Forested/Shrub Wetland
	Freshwater Pond
	Lake
	Riverine
	Sections
	Ditches
	Ditch Watershed



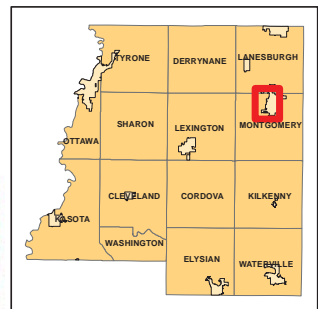
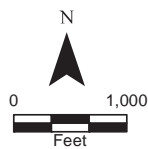
Restorable Wetlands



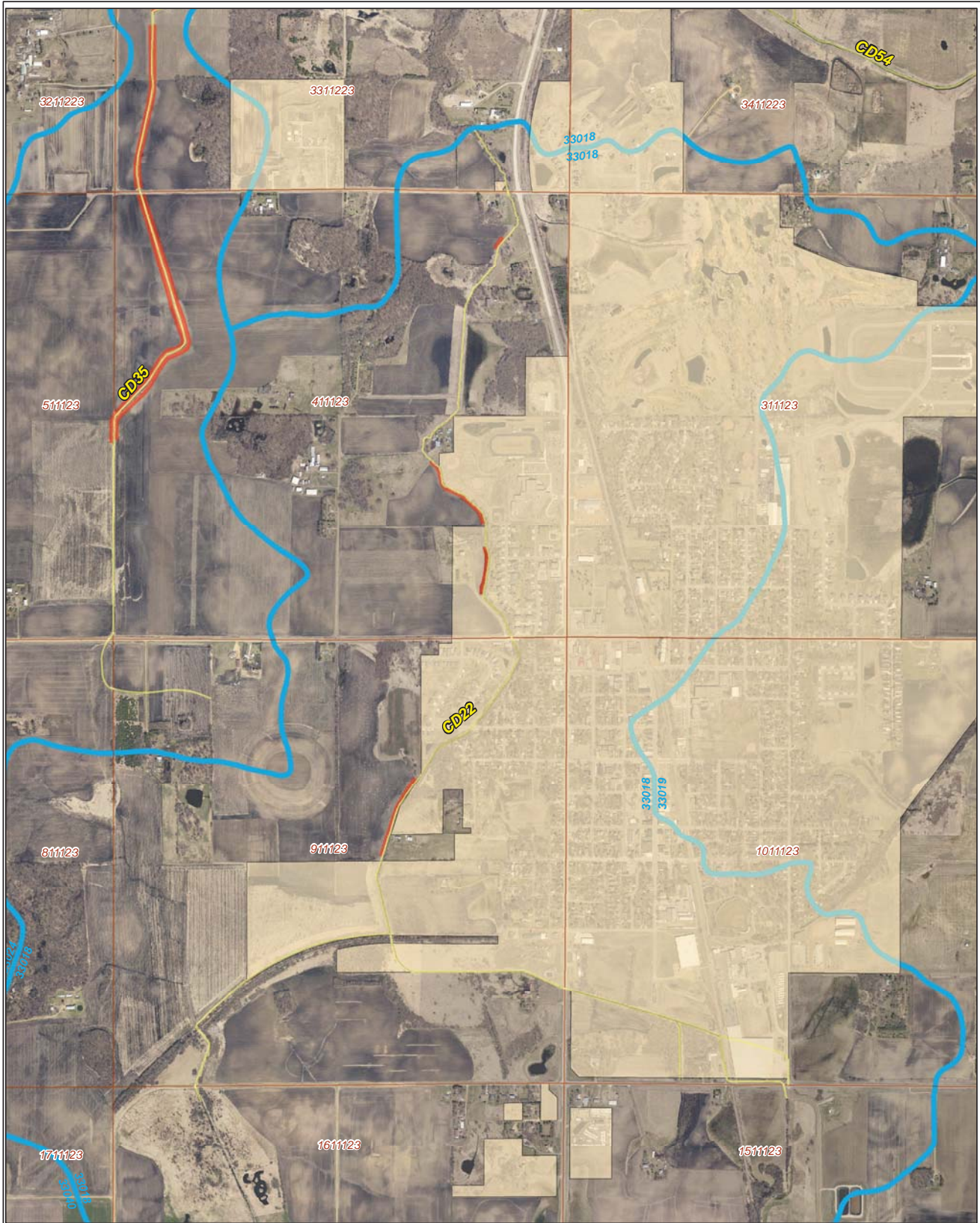
Ditch Name: CD22

Legend






- Retention Locations
- Sections
- Cities
- Ditches
- Ditch Watershed



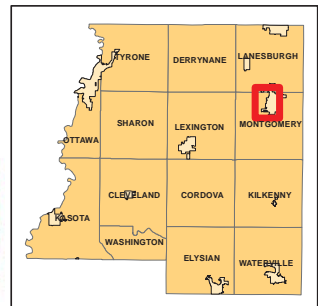
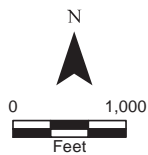
Ditch Buffer



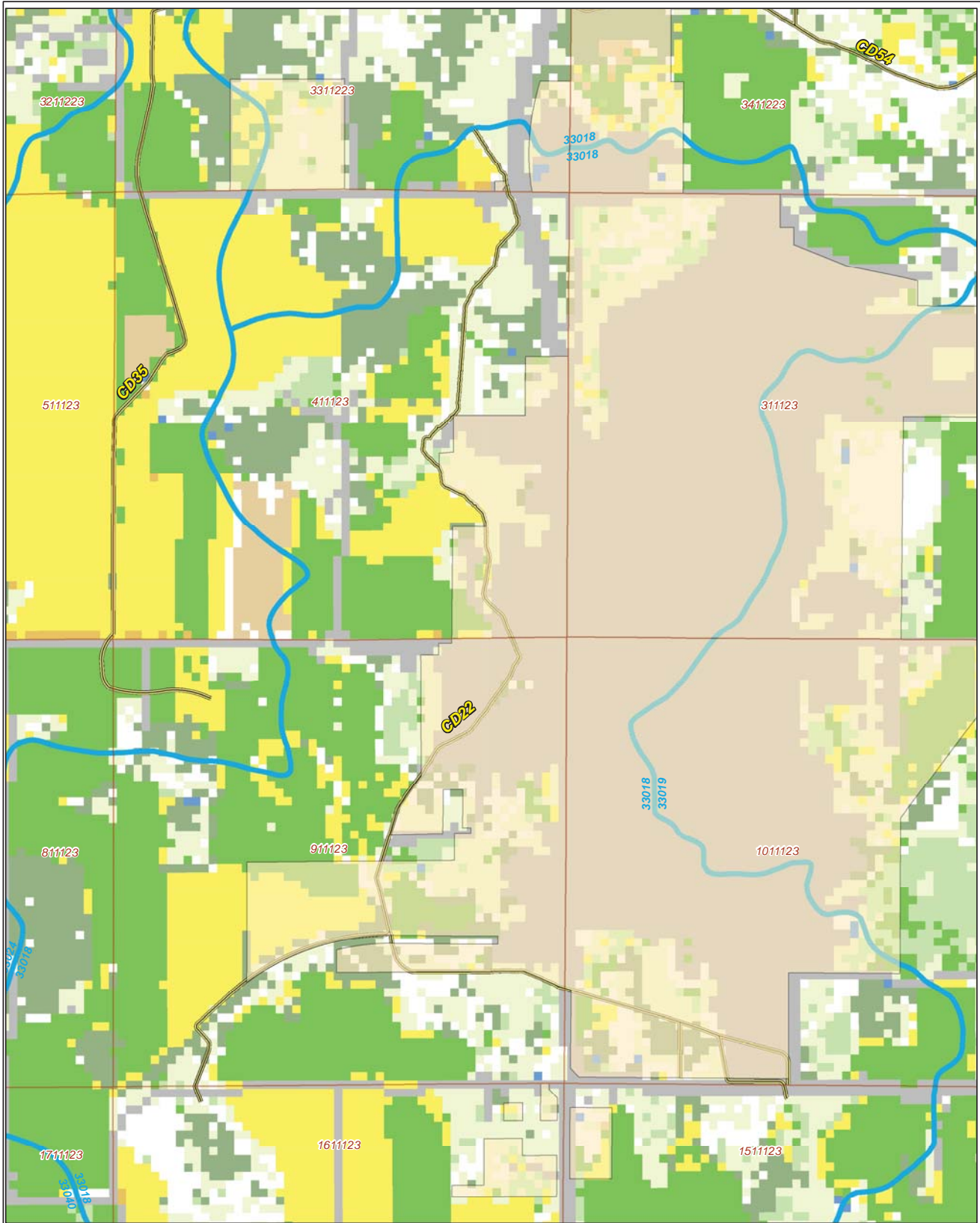
Legend

-  Ditches
-  Needs Buffer
-  Sections
-  Cities
-  Ditch Watershed

Ditch Name: CD22
Percent Buffered: 93.8%



2015 Crop Coverage



Ditch Name: CD22

Legend	
Coverage Type	
Open Water	Sections
Alfalfa	Other Hay/Non Alfalfa
Corn	Peas
Forest	Soybeans
Developed Area	Spring Wheat
Grass/Pasture	Sweet Corn
Ditch Watershed	Ditches

