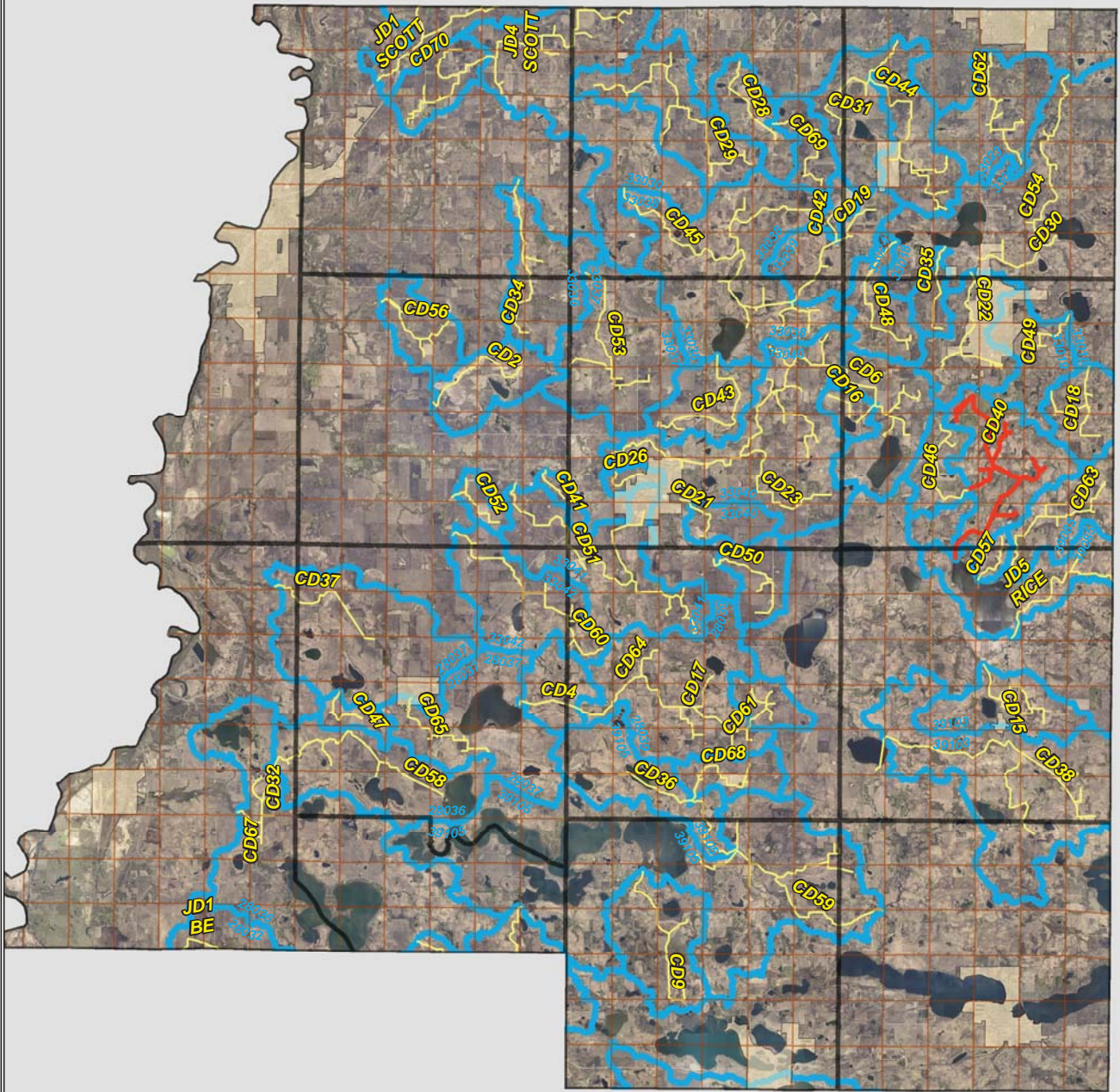


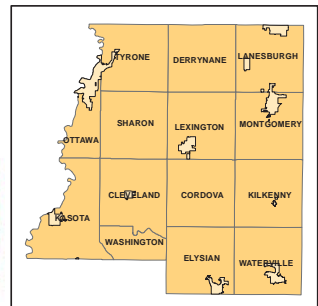
# CD 40

LO PAYS FOR CULVERTS



**Legend**

- Sections
- Cities
- Ditches**
- 
- 
- Ditch Watershed









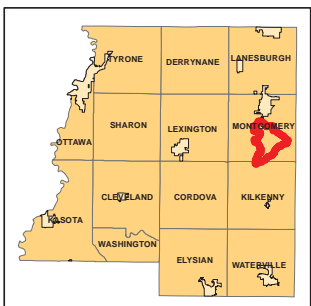
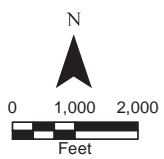
# Ditch Watershed



**Legend**

-  Sections
-  Cities
-  Ditches
-  Ditch Watershed

Ditch ID: 39085CD40  
Acres: 3645.6





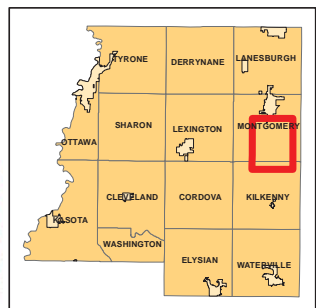
# 2006 Ditch Inventory



## Legend

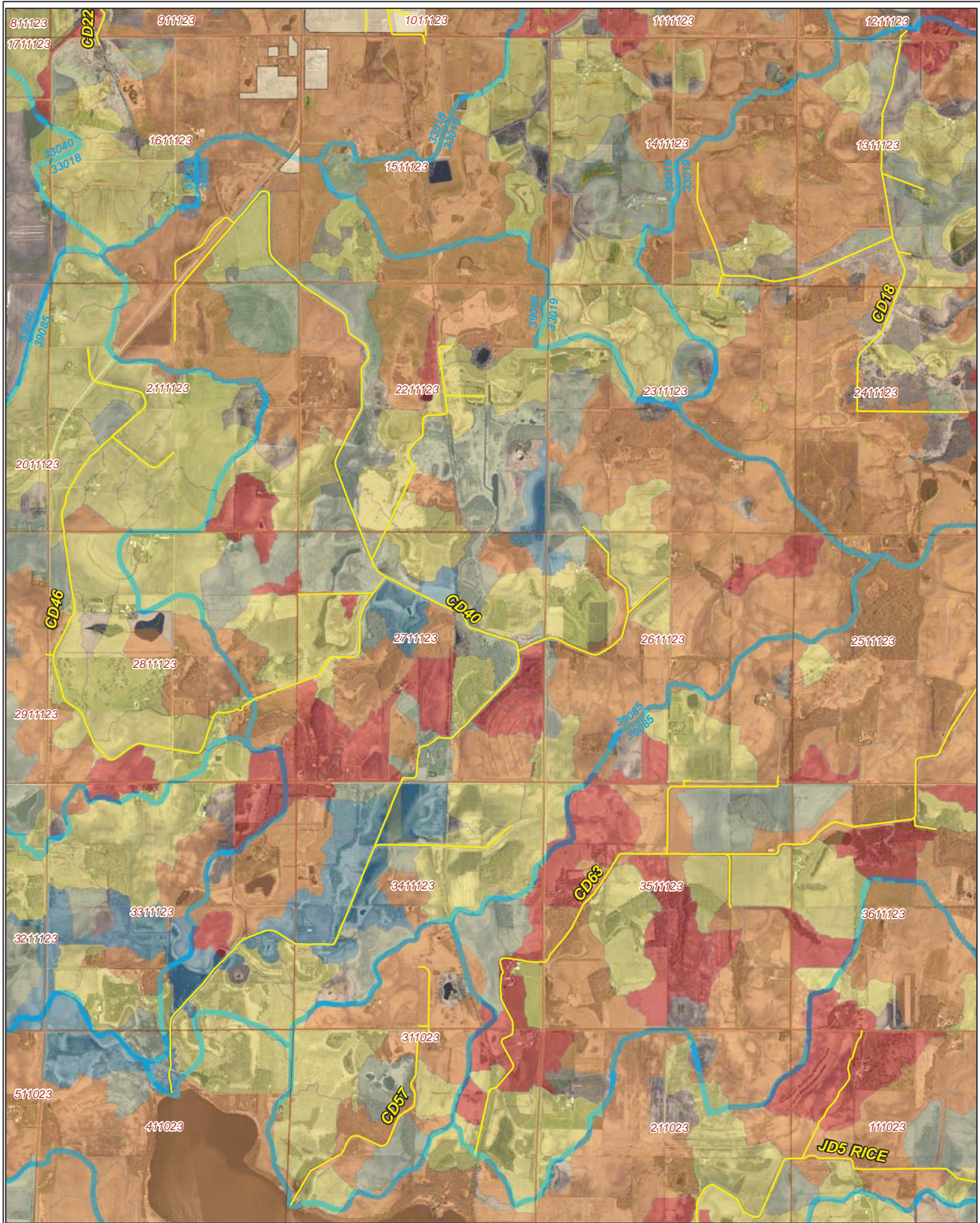
- Ditch Inventory
- Sections
- Cities
- Ditches
- Ditch Watershed

Ditch Name: CD40



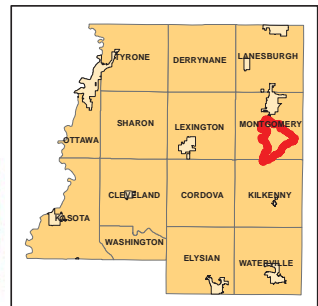
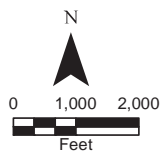


# High Priority - Stream Power Index Sites



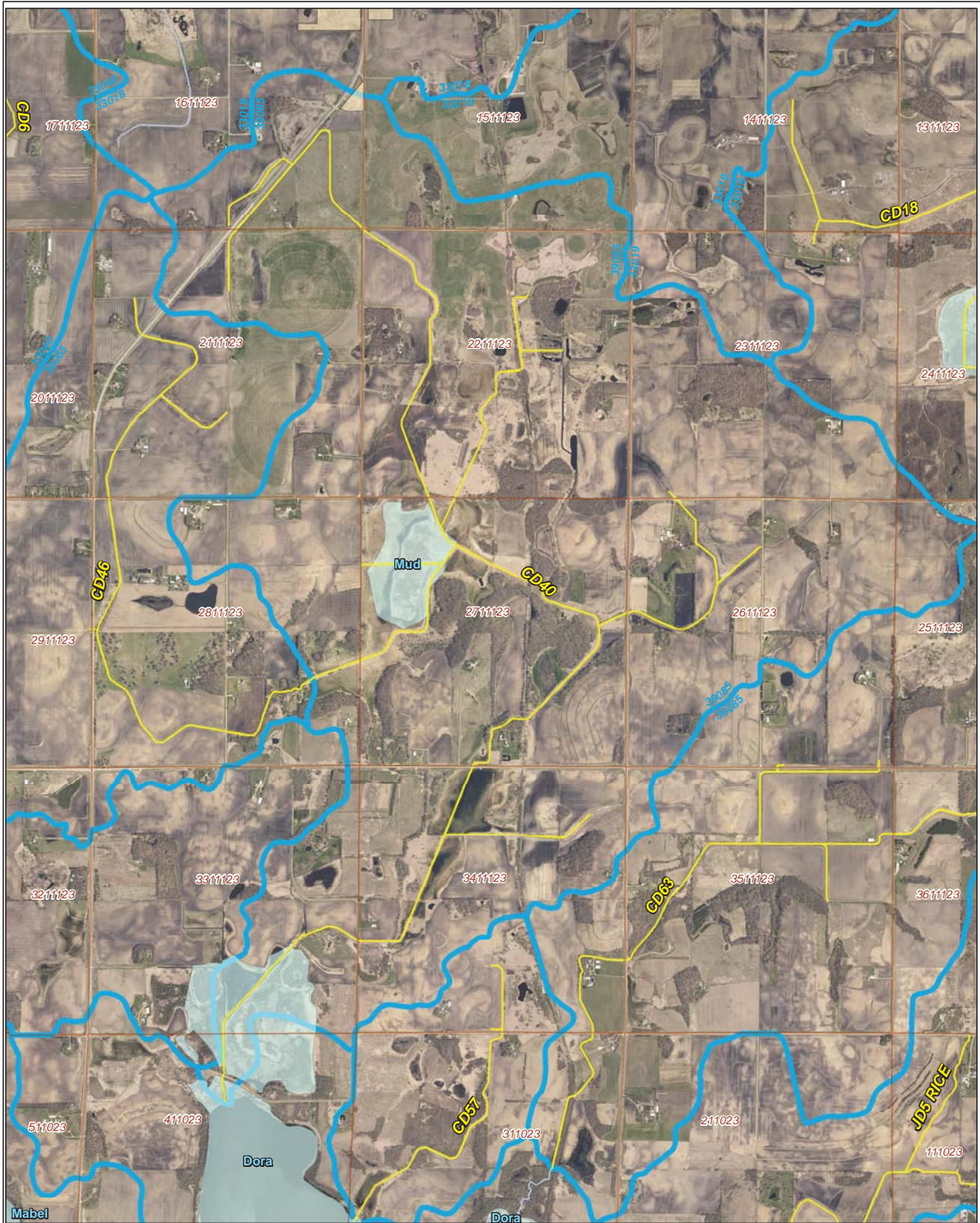
Ditch Name: CD40

Legend		
<b>Mean SPI Rank</b>	<b>Combined Sediment and SPI Rank</b>	Ditches
Low	Low	Sections
Low/Moderate	Low/Moderate	Cities
Moderate	Moderate	Ditch Watershed
High/Moderate	Moderate/High	
High	High	





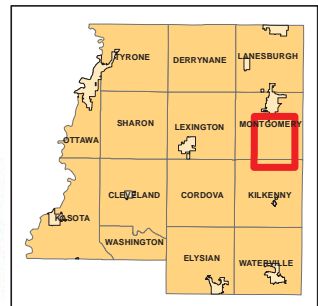
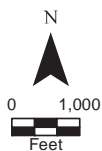
# DNR Public Waters



Ditch Name: CD40

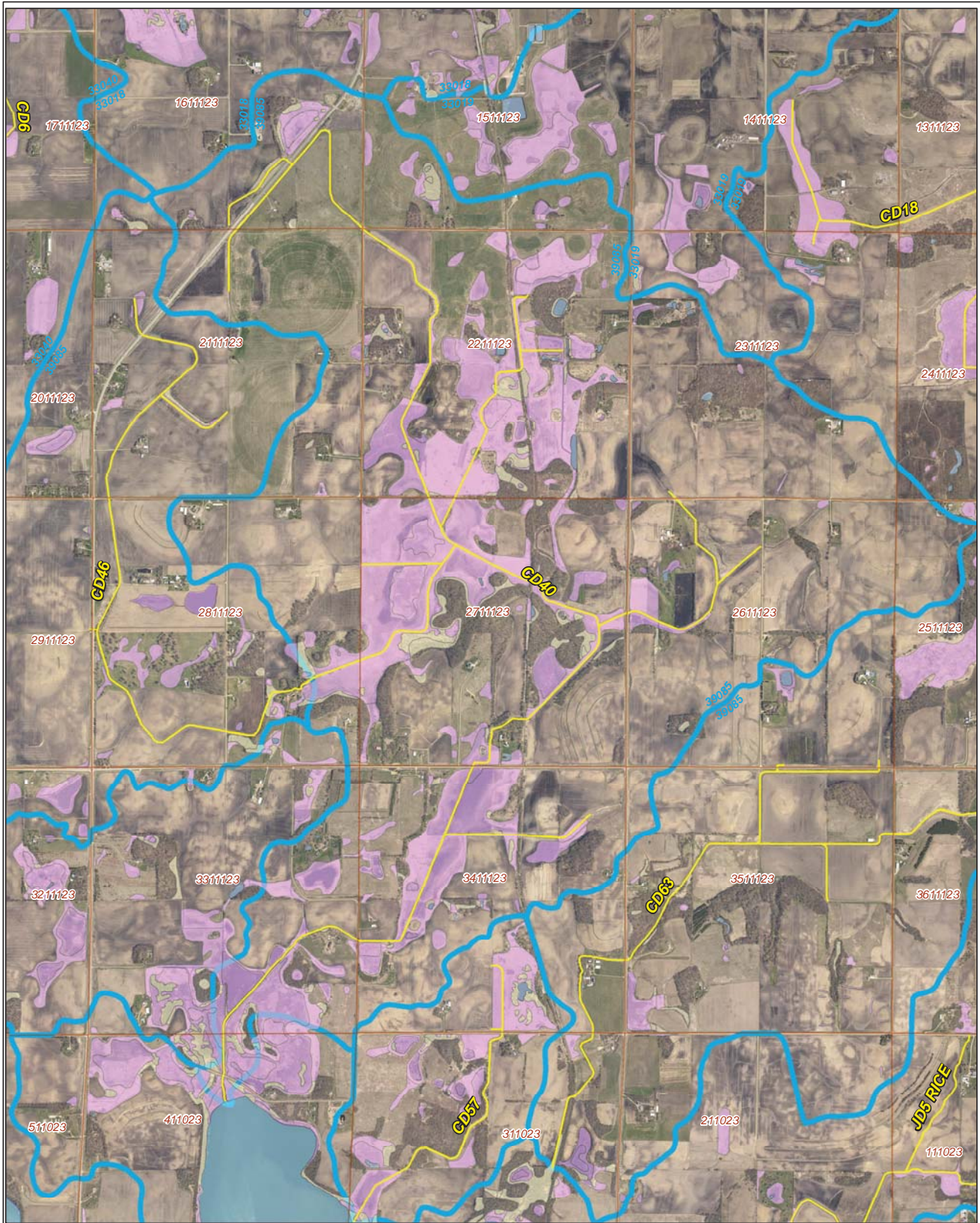
## Legend

- DNR Public Lakes and Basins
- DNR Rivers and Streams
- Sections
- Cities
- Ditches
- Ditch Watershed





# 2015 Wetland Inventory



Ditch Name: CD40

**Legend**

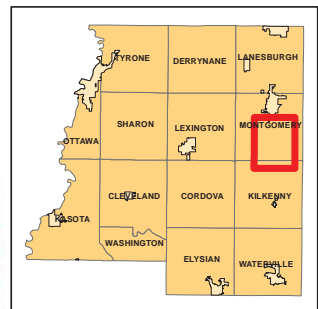
**Wetland Type**

- Freshwater Emergent Wetland
- Freshwater Forested/Shrub Wetland
- Freshwater Pond
- Lake
- Riverine

Sections

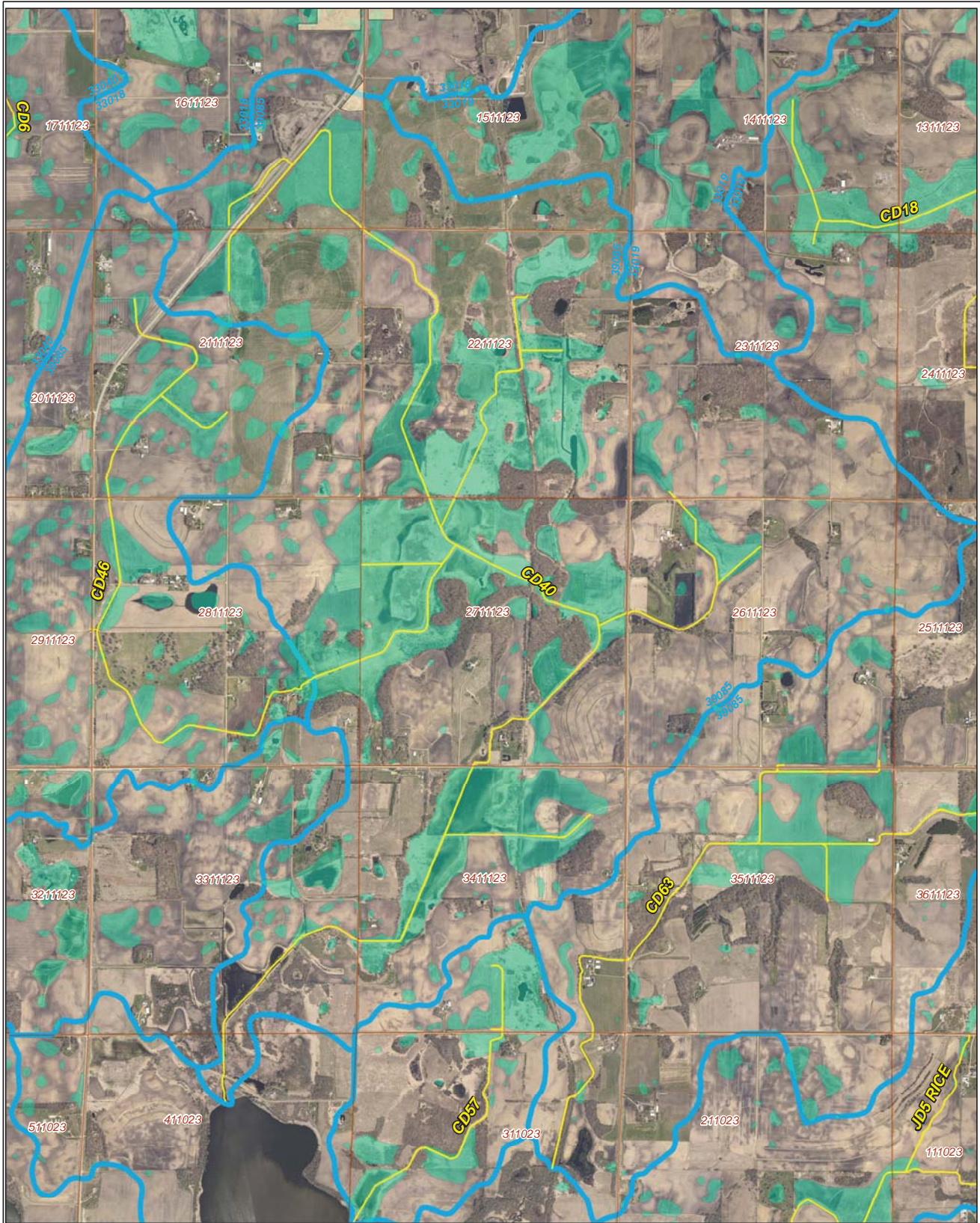
Ditches

Ditch Watershed





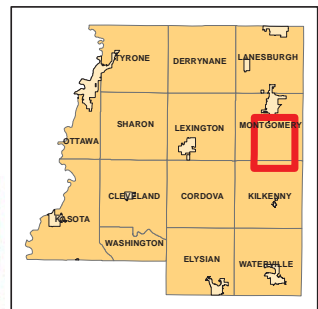
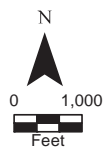
# Restorable Wetlands



Ditch Name: CD40

## Legend

- Retention Locations
- Sections
- Cities
- Ditches
- Ditch Watershed









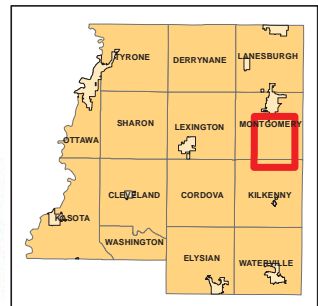
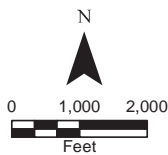
# Ditch Buffer



## Legend

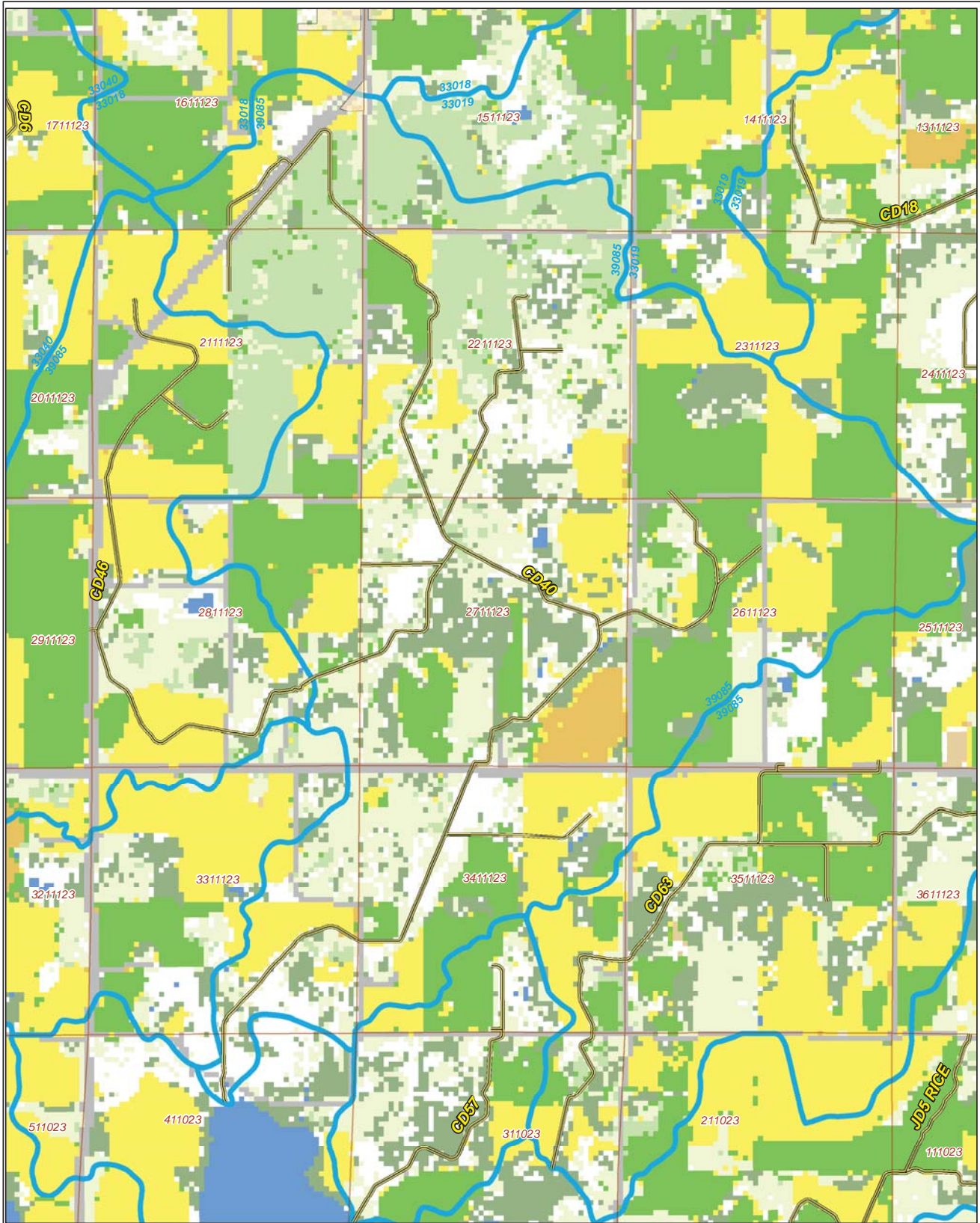
-  Ditches
-  Needs Buffer
-  Sections
-  Cities
-  Ditch Watershed

Ditch Name: CD40  
Percent Buffered: 86.33%





# 2015 Crop Coverage



Ditch Name: CD40

Legend	
<b>Coverage Type</b>	
Open Water	Sections
Alfalfa	Other Hay/Non Alfalfa
Corn	Peas
Forest	Soybeans
Developed Area	Spring Wheat
Grass/Pasture	Sweet Corn
	Ditches
	Ditch Watershed

