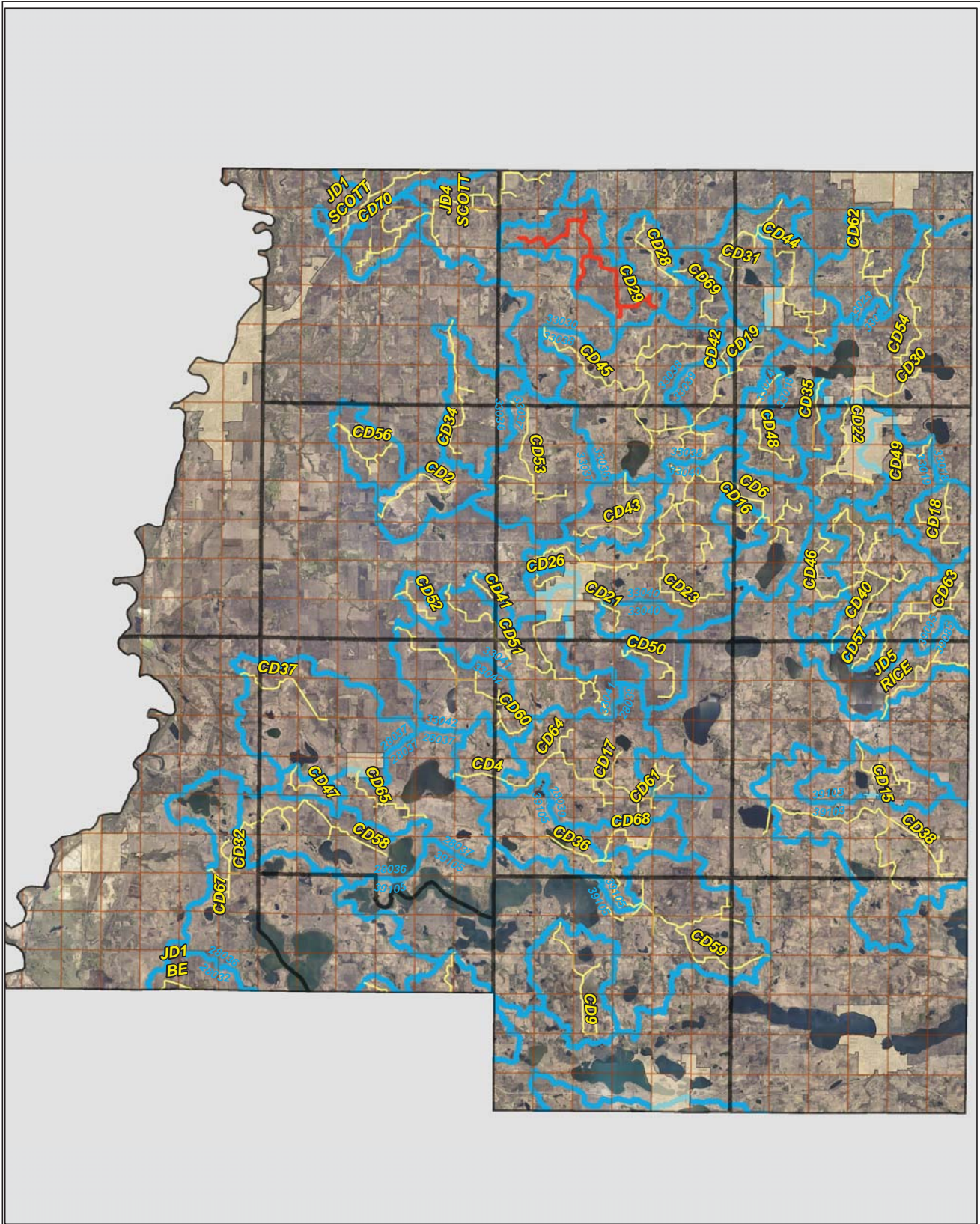
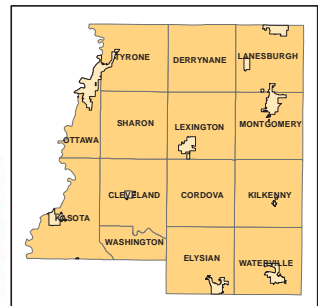
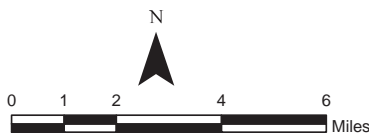


CD 29

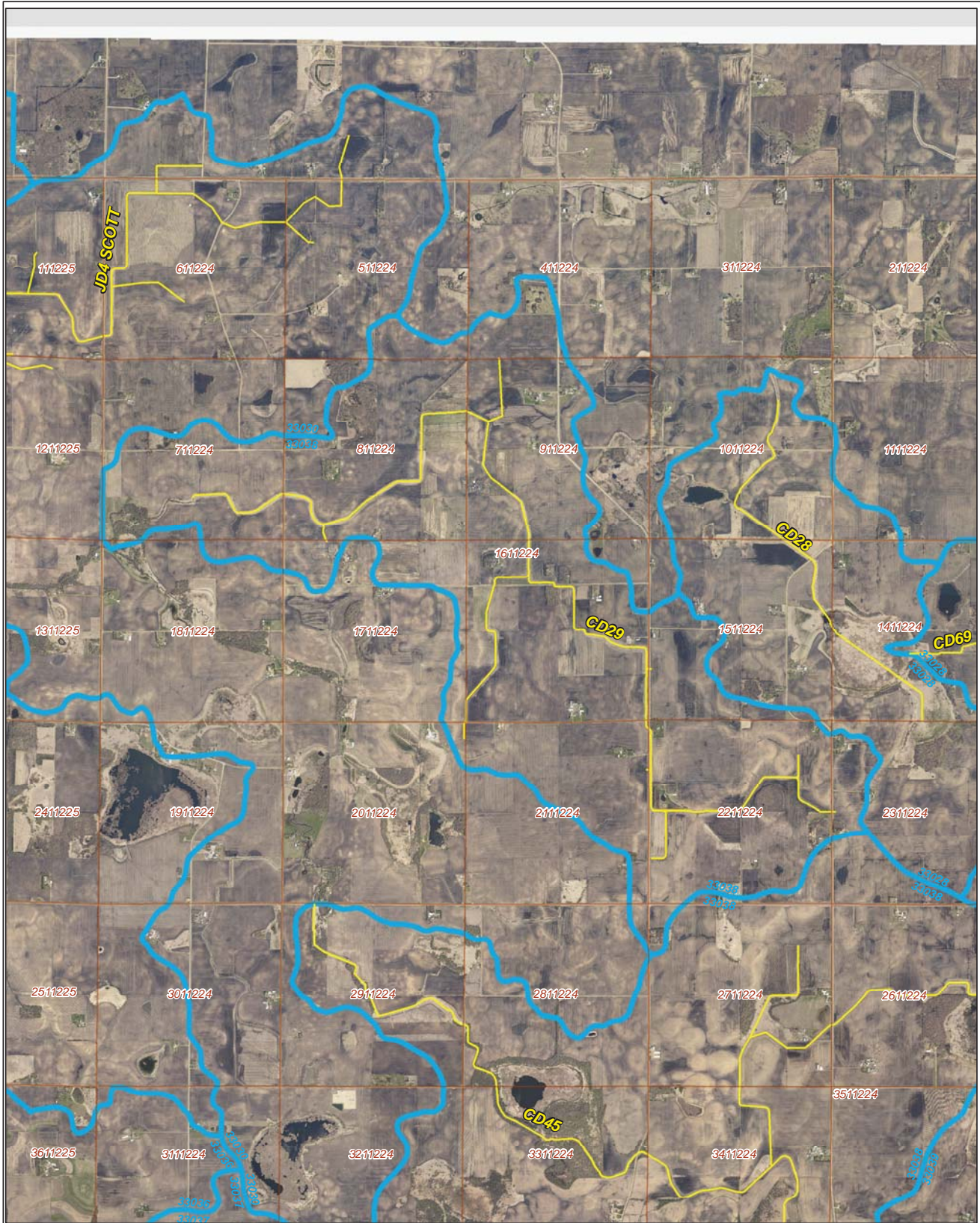


Legend





- Sections
- Cities
- Ditches**
-
-
- Ditch Watershed



Ditch Watershed



Legend

-  Sections
-  Cities
-  Ditches
-  Ditch Watershed

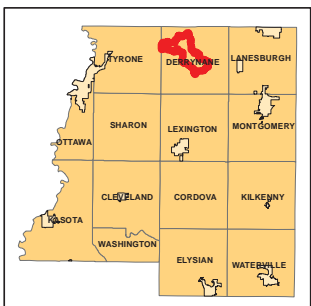
Ditch ID: 33038CD29
Acres: 3496.66



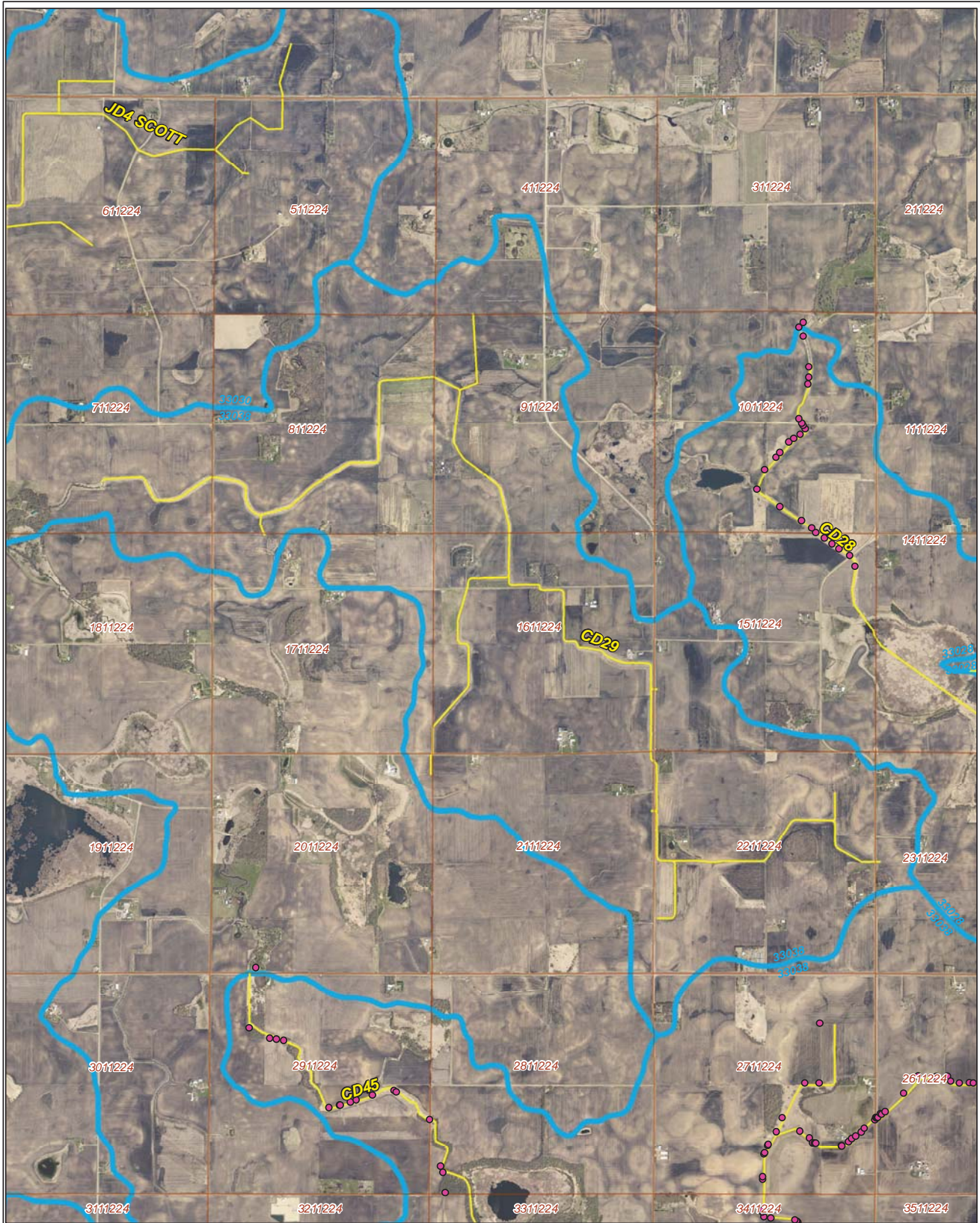
N



0 1,000 2,000
Feet

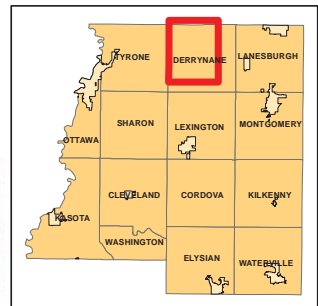
2006 Ditch Inventory



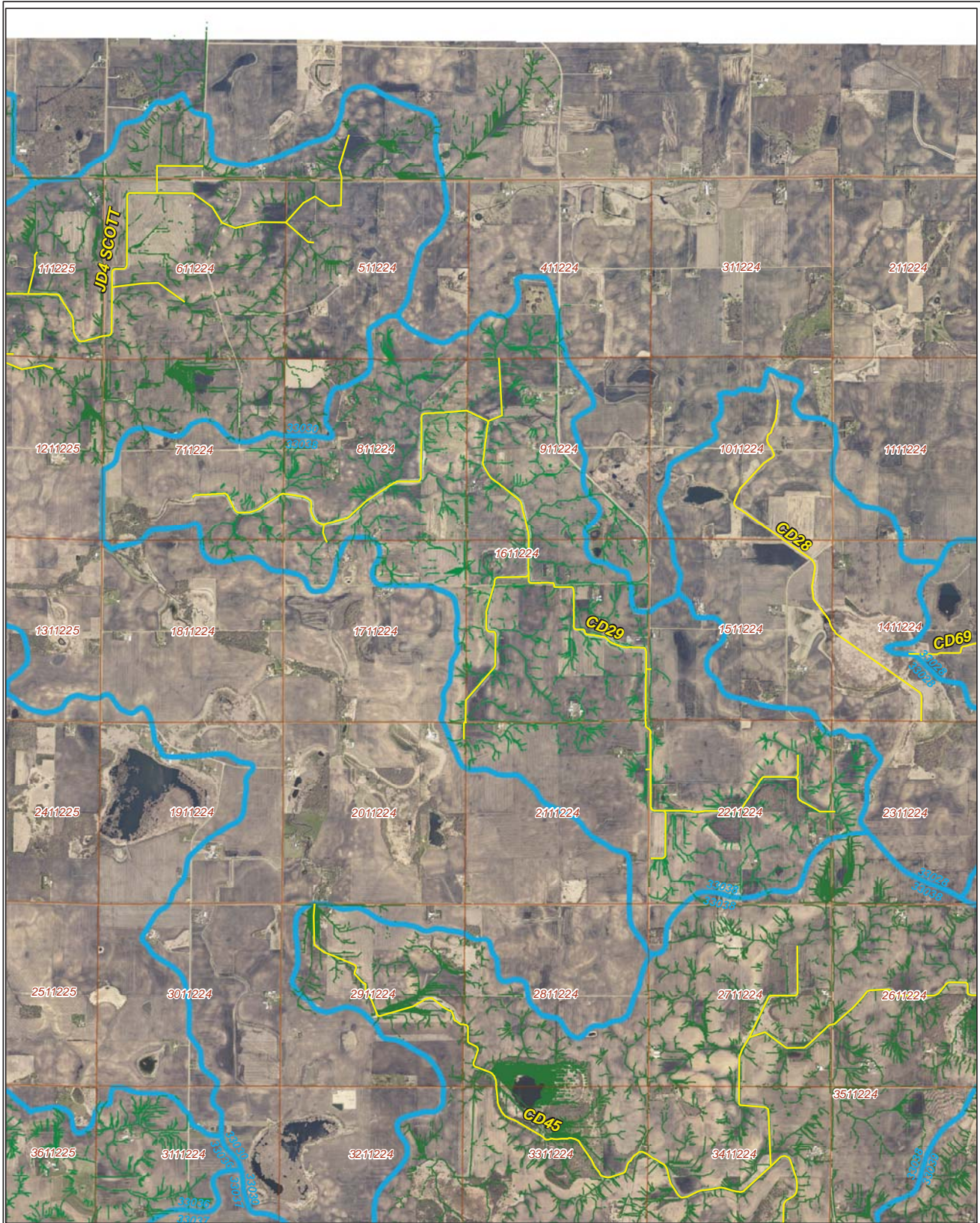
Legend

- Ditch Inventory
- Sections
- Cities
- Ditches
- Ditch Watershed






Ditch Name: CD29



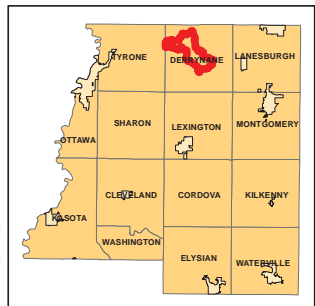
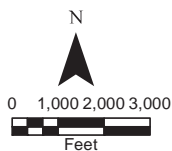
High Priority - Stream Power Index Sites



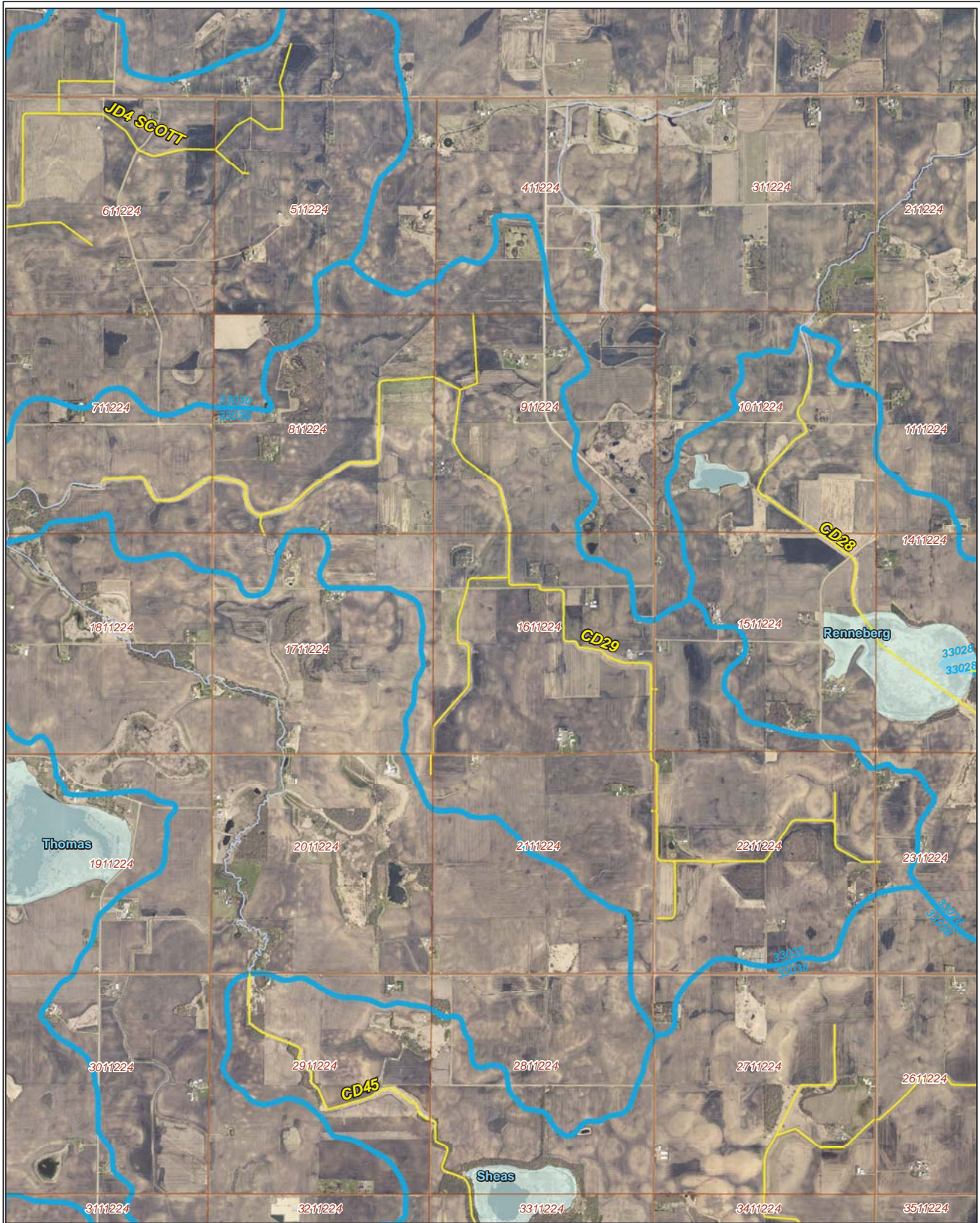
Legend

-  Sediment
-  Ditches
-  Sections
-  Cities
-  Ditch Watershed

Ditch Name: CD29

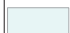







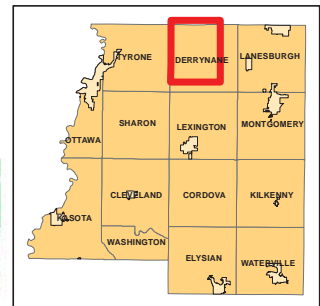
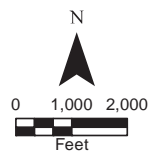
DNR Public Waters



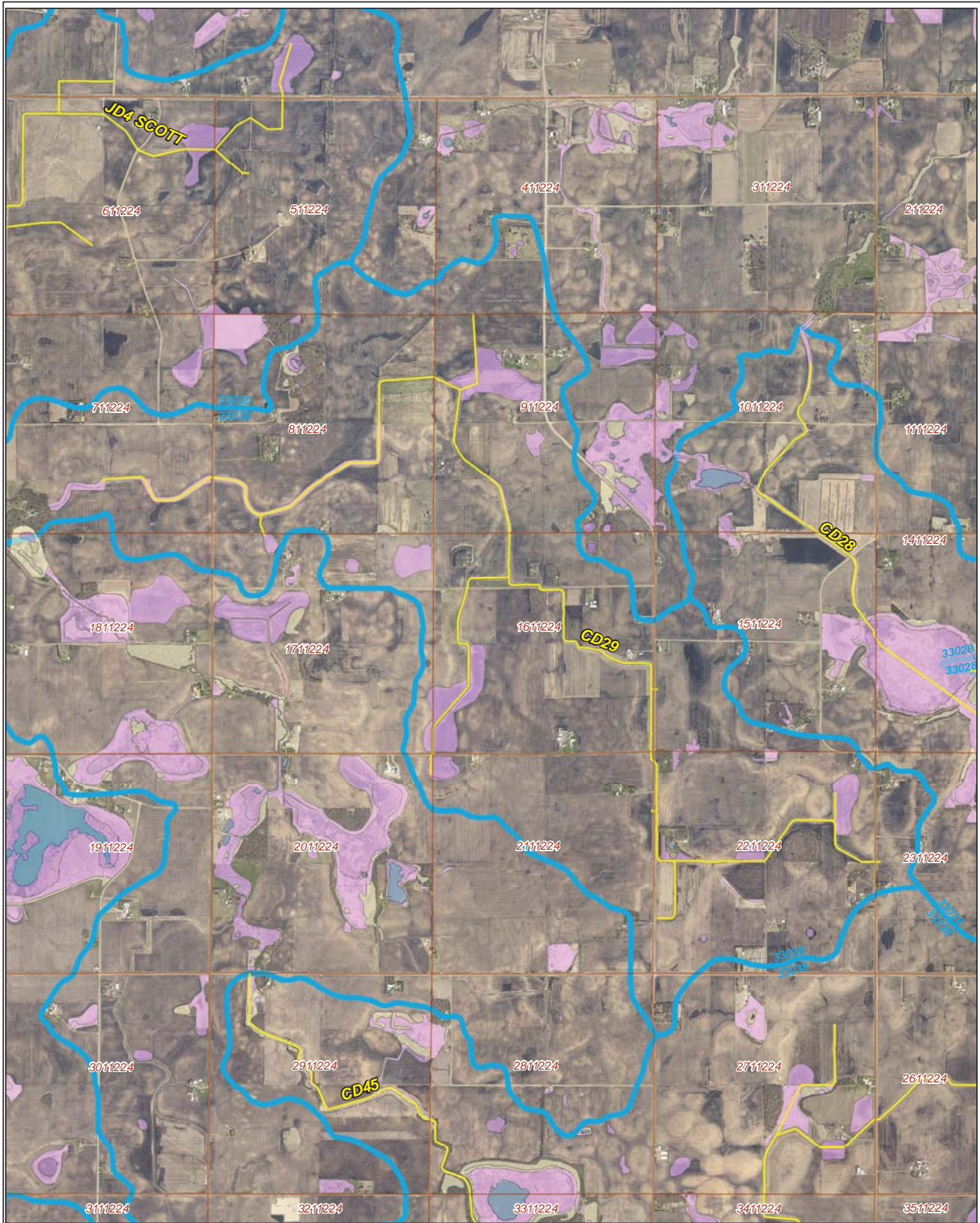
Ditch Name: CD29

Legend

-  DNR Public Lakes and Basins
-  DNR Rivers and Streams
-  Sections
-  Cities
-  Ditches
-  Ditch Watershed

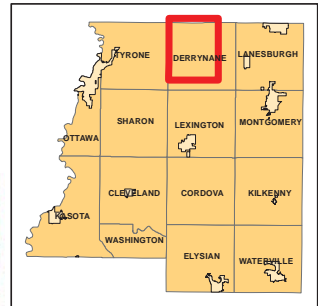
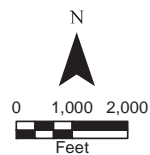


2015 Wetland Inventory

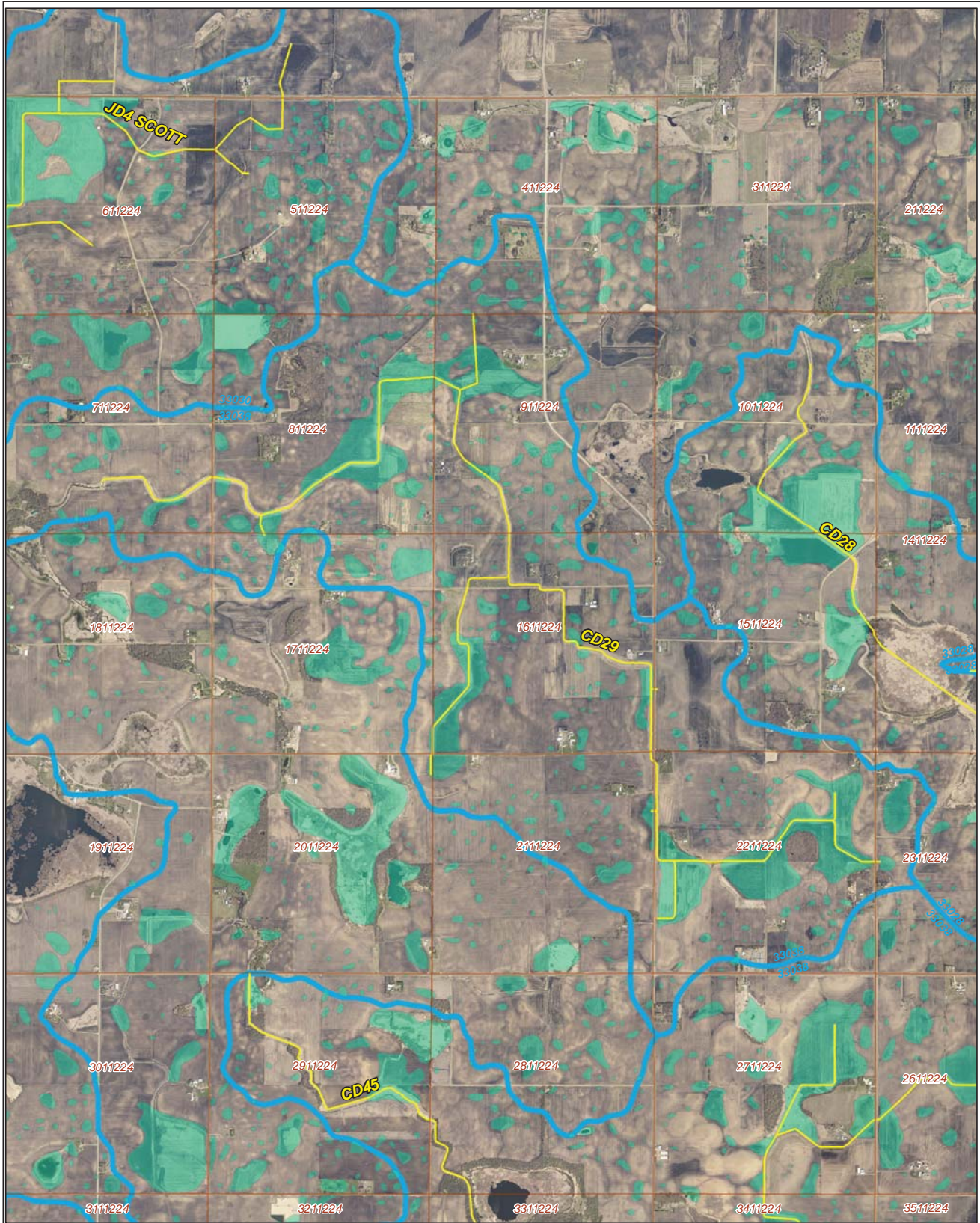


Ditch Name: CD29

Legend	
	Freshwater Emergent Wetland
	Freshwater Forested/Shrub Wetland
	Freshwater Pond
	Lake
	Riverine
	Sections
	Ditches
	Ditch Watershed



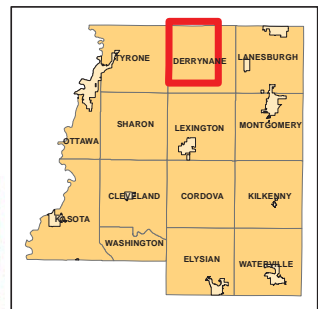
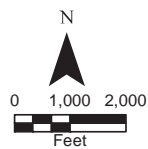
Restorable Wetlands



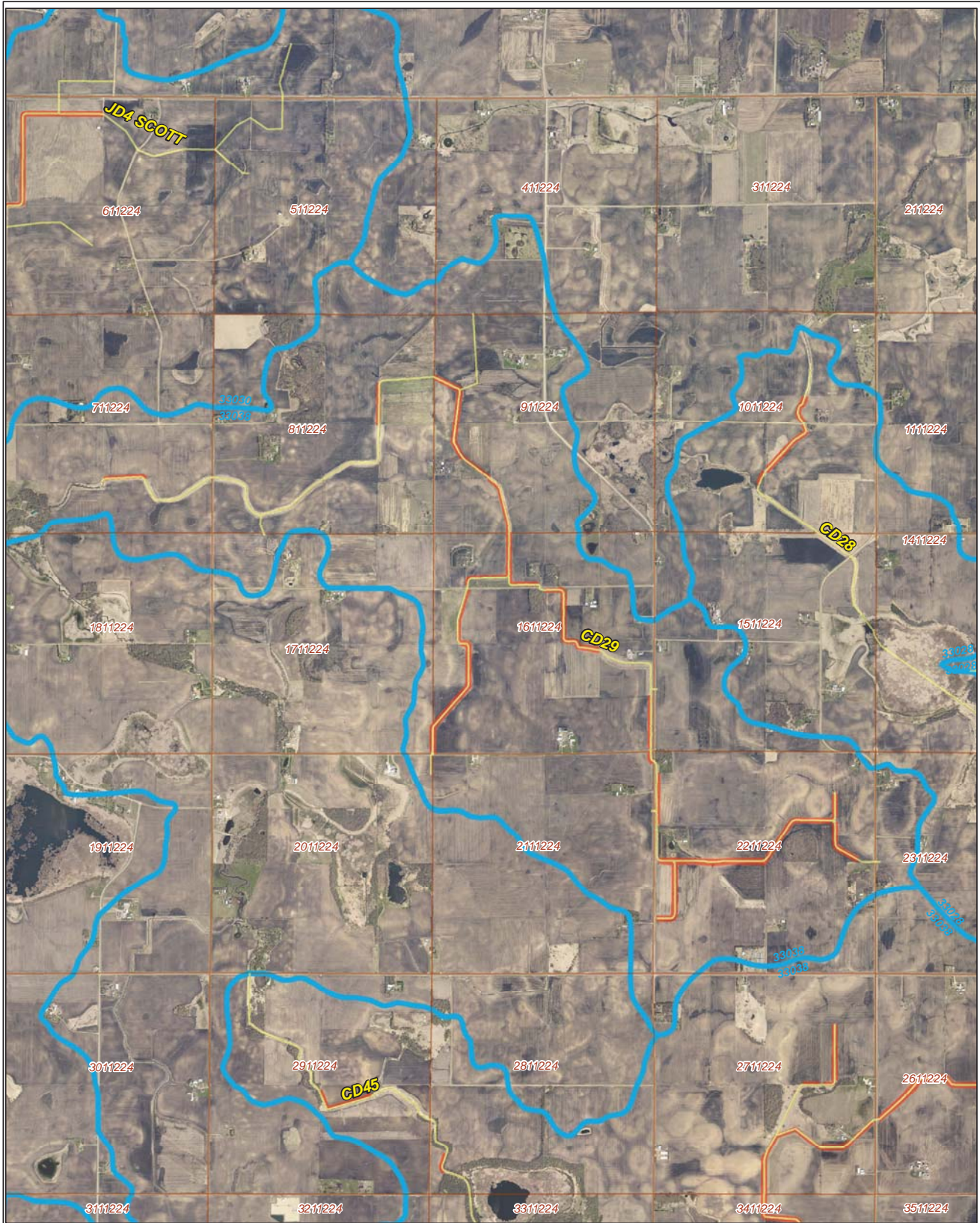
Ditch Name: CD29

Legend





- Retention Locations
- Sections
- Cities
- Ditches
- Ditch Watershed



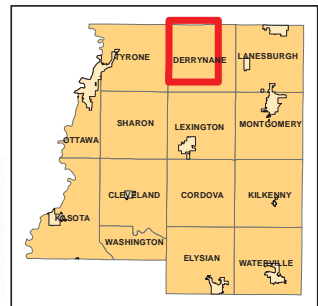
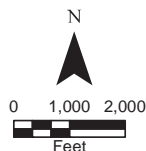
Ditch Buffer



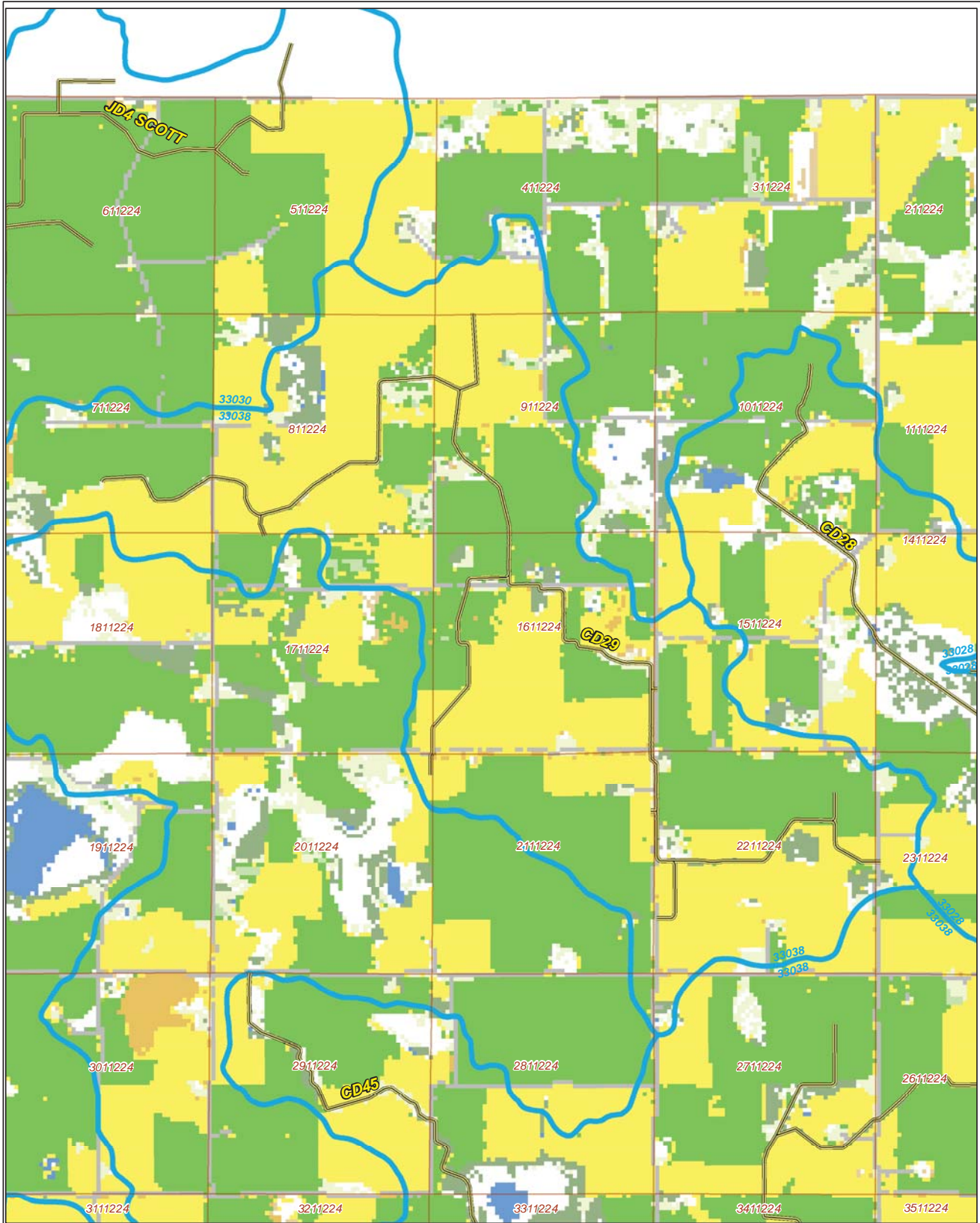
Legend

-  Ditches
-  Needs Buffer
-  Sections
-  Cities
-  Ditch Watershed

Ditch Name: CD29
Percent Buffered: 50.67%



2015 Crop Coverage



Ditch Name: CD29

Legend	
Coverage Type	
Open Water	Sections
Alfalfa	Cities
Corn	Ditches
Forest	Ditch Watershed
Developed Area	Spring Wheat
Grass/Pasture	Sweet Corn
Peas	
Soybeans	

