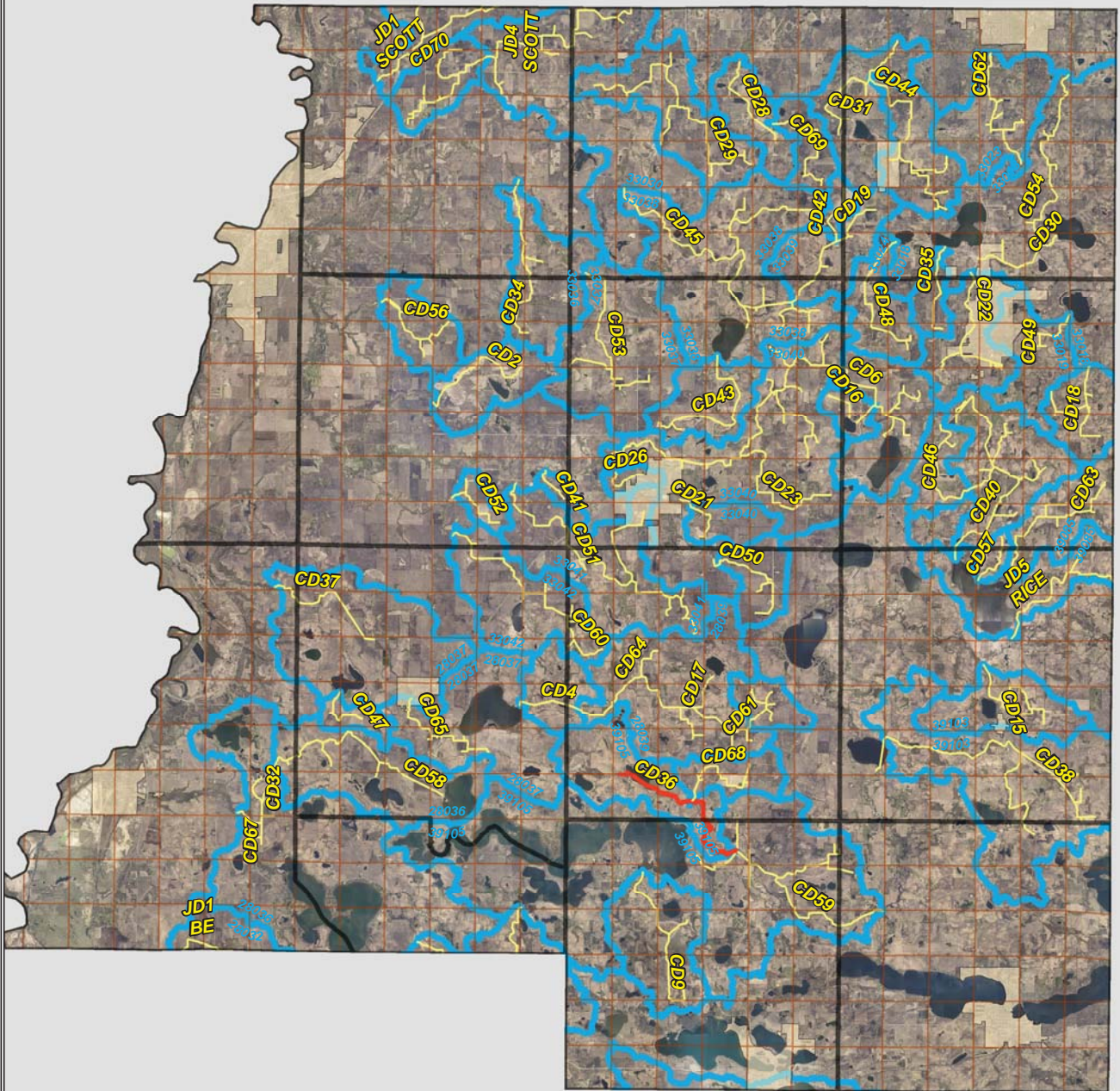


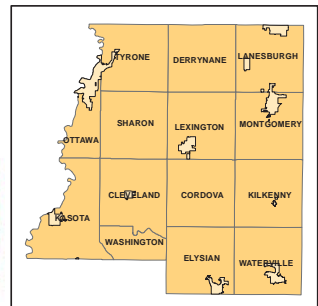
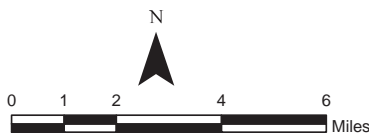
CD 36

LO PAYS FOR CULVERTS

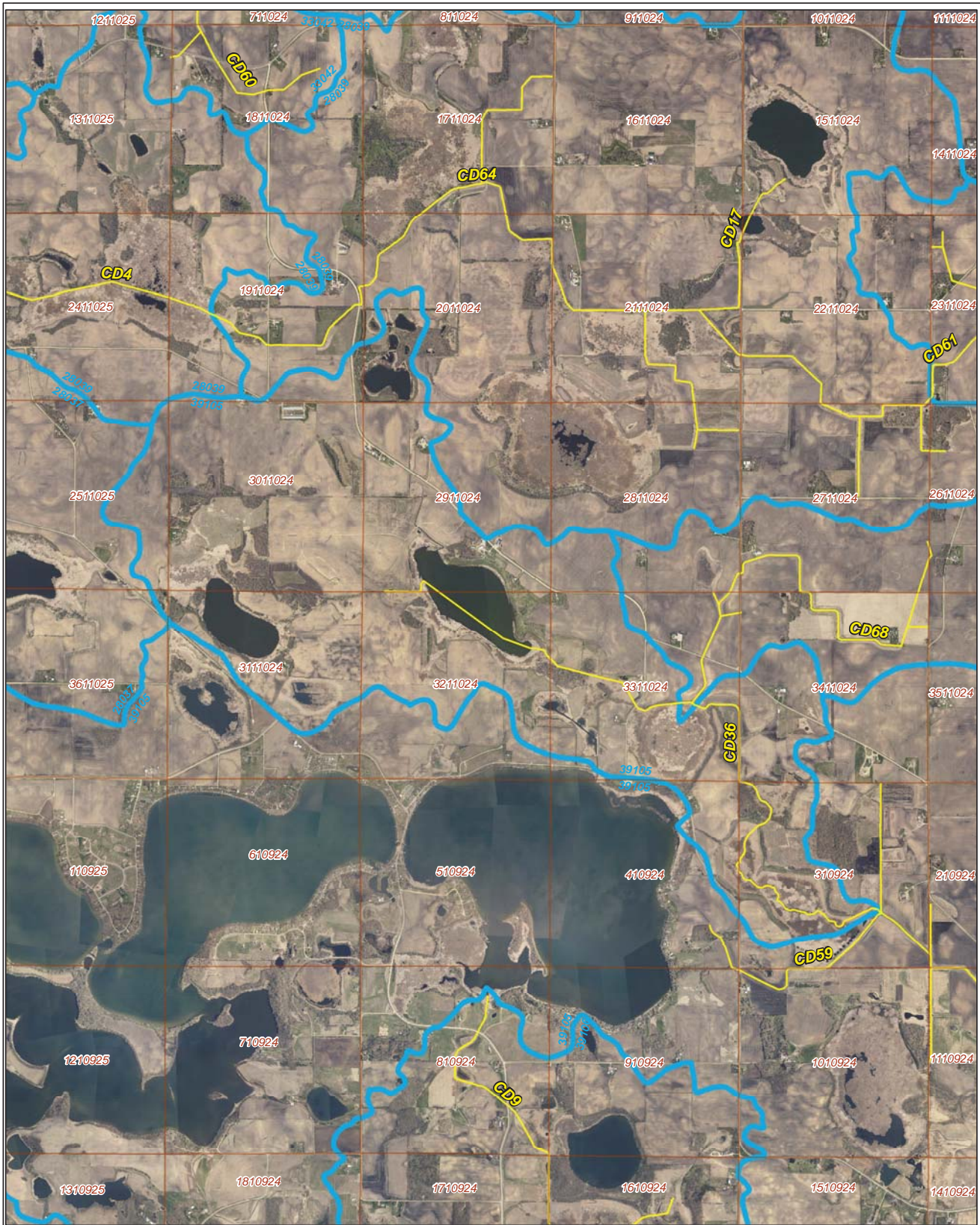


Legend





- Sections
- Cities
- Ditches
- Ditch Watershed



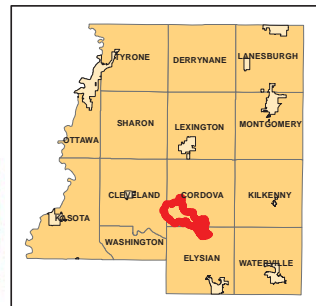
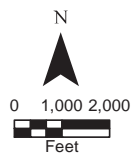
Ditch Watershed



Legend

-  Sections
-  Cities
-  Ditches
-  Ditch Watershed

Ditch ID: 39105CD36
Acres: 3154.35



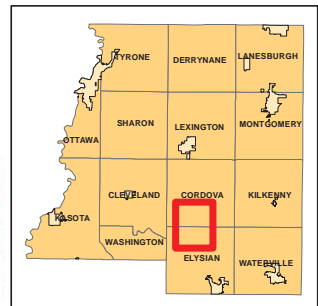
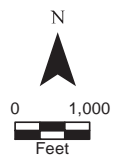
2006 Ditch Inventory



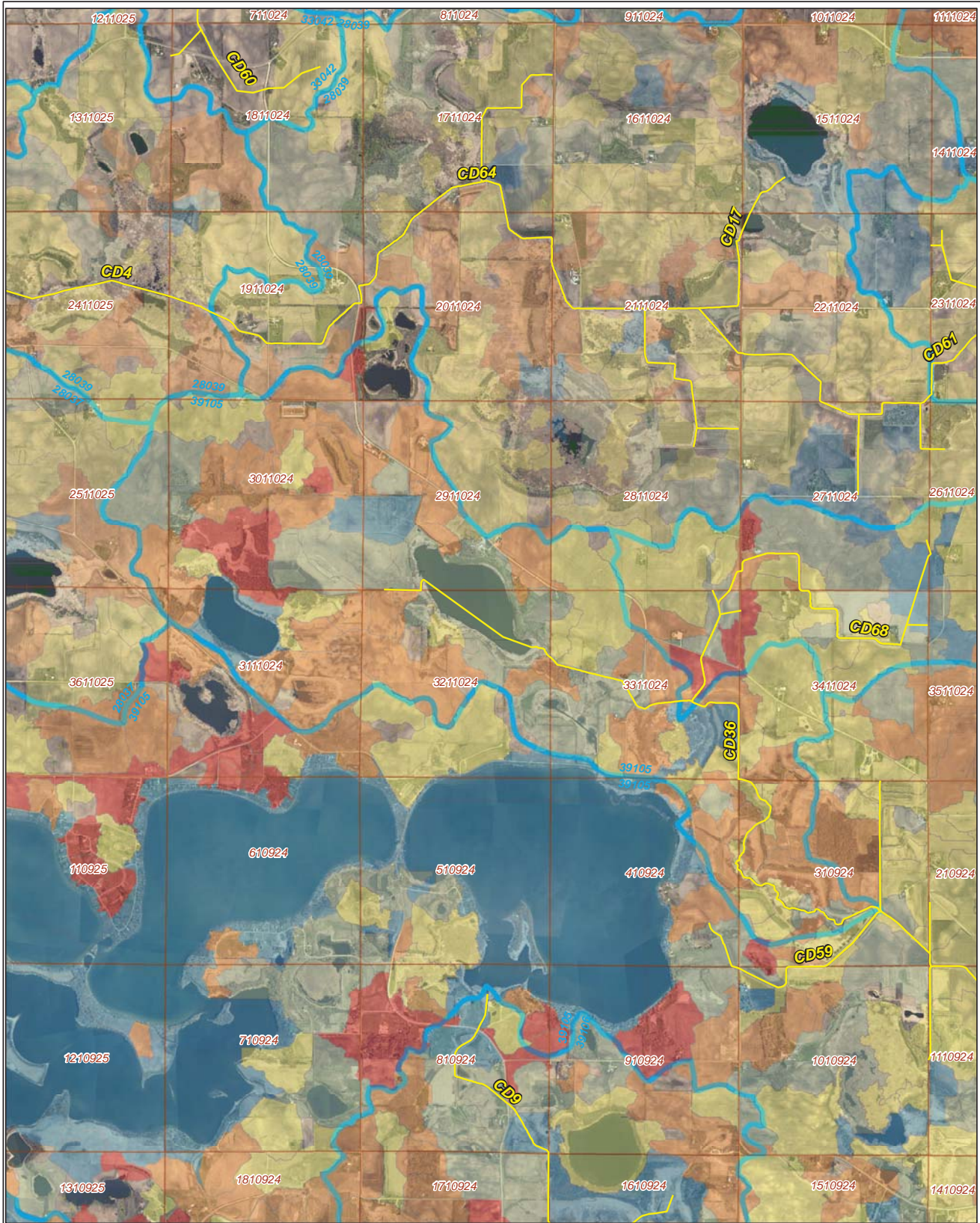
Legend

- Ditch Inventory
- Sections
- Cities
- Ditches
- Ditch Watershed

Ditch Name: CD36

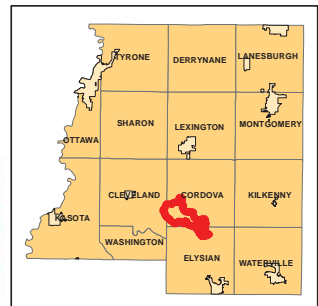
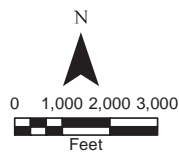


High Priority - Stream Power Index Sites



Ditch Name: CD36

Legend		
Mean SPI Rank	Combined Sediment and SPI Rank	Ditches
Low	Low	Sections
Low/Moderate	Low/Moderate	Cities
Moderate	Moderate	Ditch Watershed
High/Moderate	Moderate/High	
High	High	









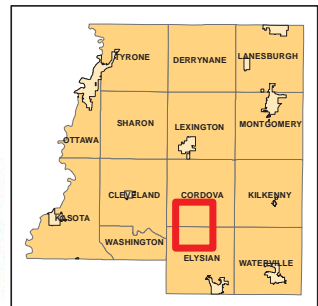
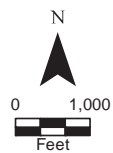
DNR Public Waters



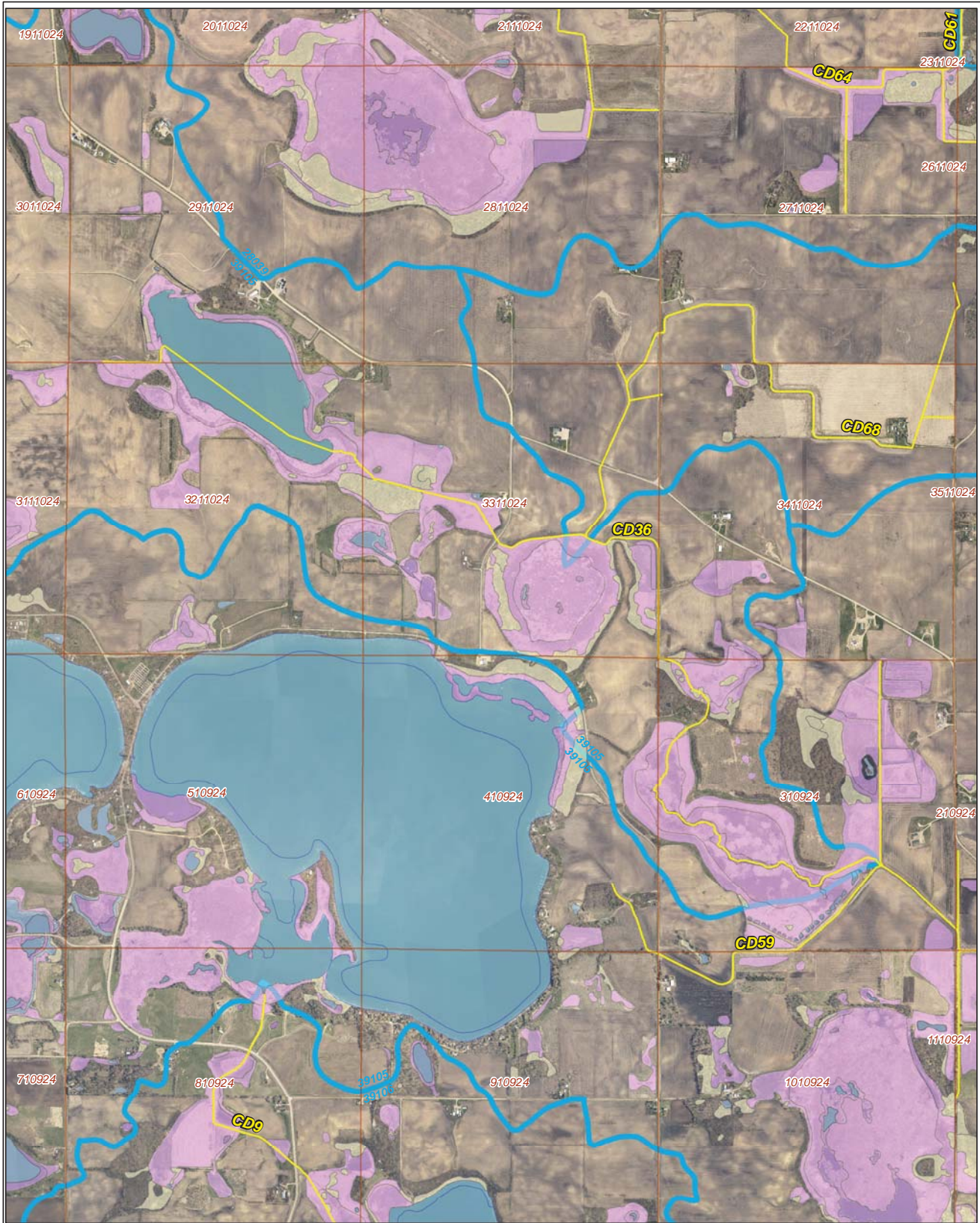
Ditch Name: CD36

Legend

-  DNR Public Lakes and Basins
-  DNR Rivers and Streams
-  Sections
-  Cities
-  Ditches
-  Ditch Watershed

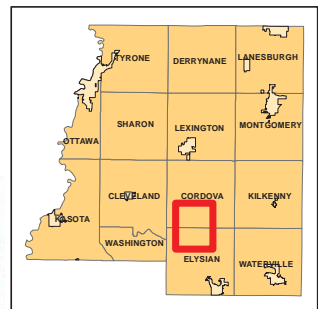
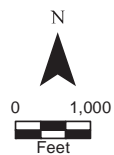


2015 Wetland Inventory

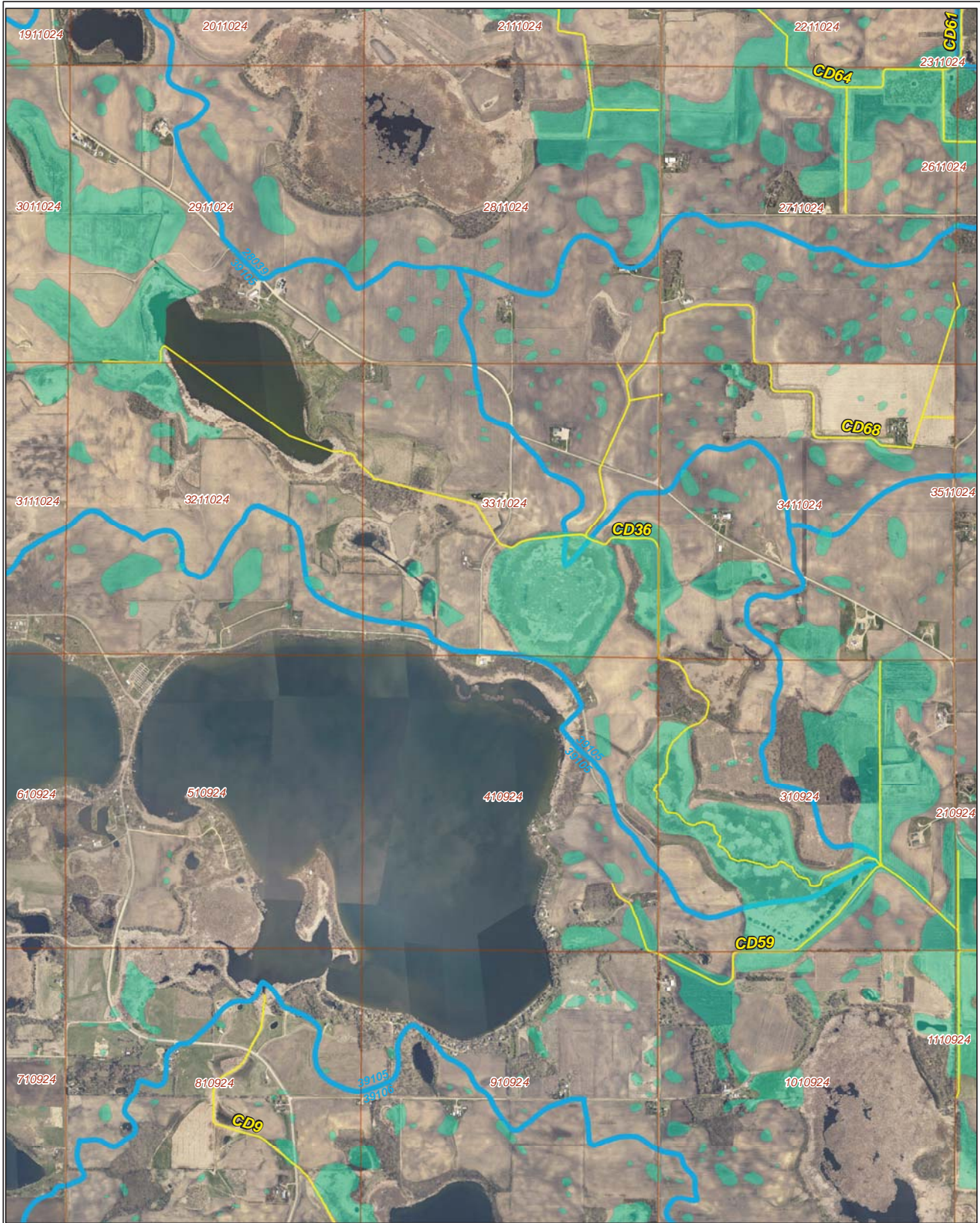


Ditch Name: CD36

Legend	
Wetland Type	
	Freshwater Emergent Wetland
	Freshwater Forested/Shrub Wetland
	Freshwater Pond
	Lake
	Riverine
	Sections
	Ditches
	Ditch Watershed



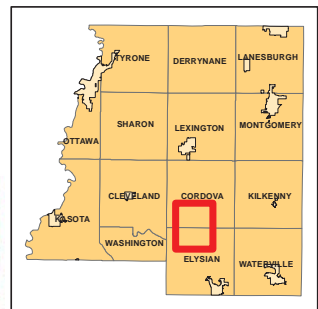
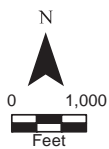
Restorable Wetlands



Ditch Name: CD36

Legend

- Retention Locations
- Sections
- Cities
- Ditches
- Ditch Watershed



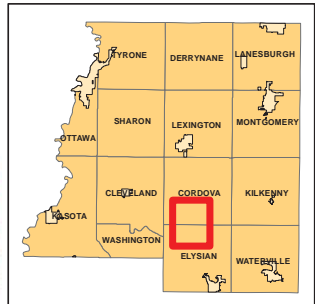
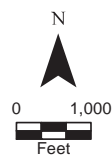
Ditch Buffer



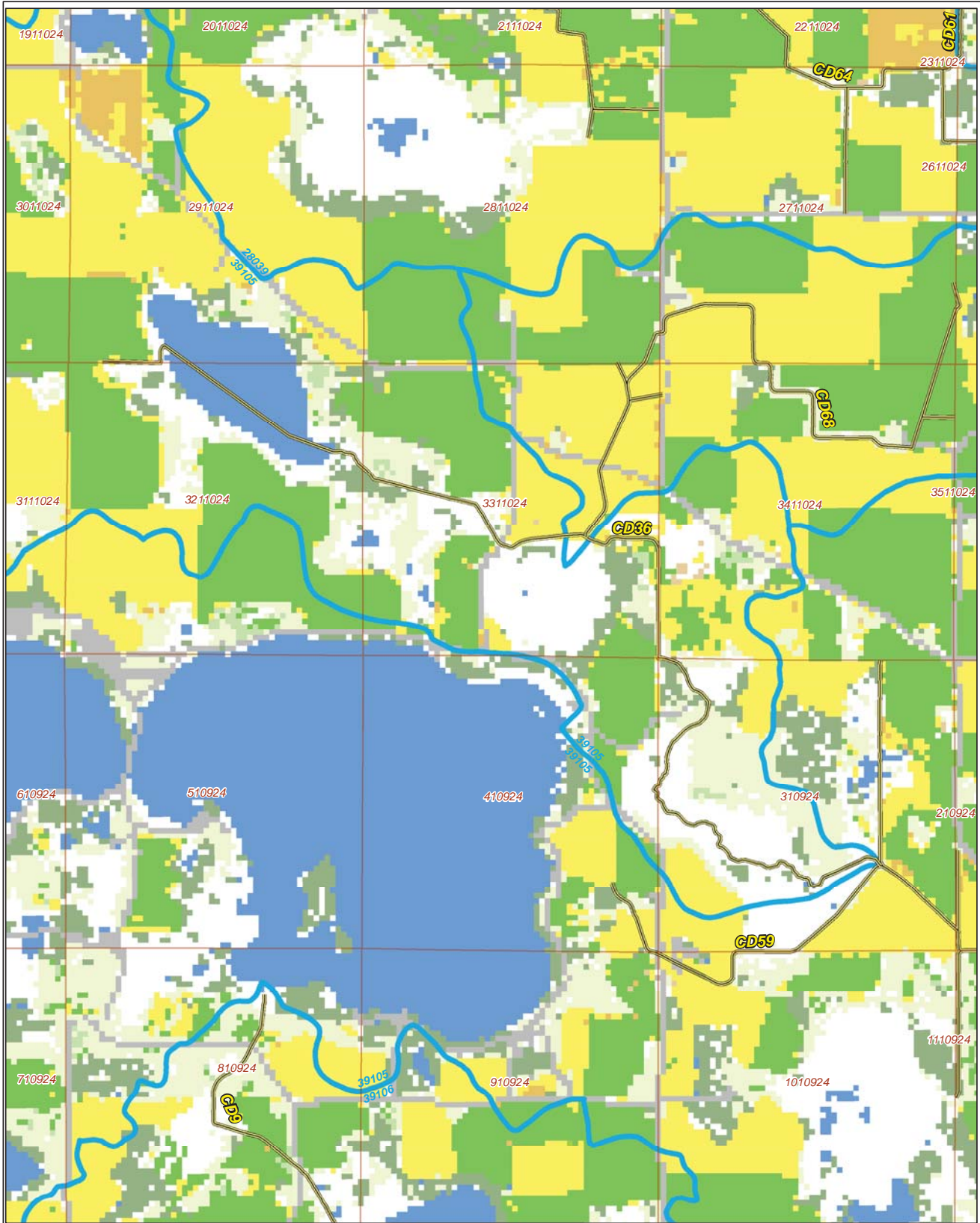
Legend

-  Ditches
-  Needs Buffer
-  Sections
-  Cities
-  Ditch Watershed

Ditch Name: CD36
 Percent Buffered: 81.47%



2015 Crop Coverage



Ditch Name: CD36

Legend		
Coverage Type		
Alfalfa	Open Water	Sections
Corn	Other Hay/Non Alfalfa	Cities
Forest	Peas	Ditches
Developed Area	Soybeans	Ditch Watershed
Grass/Pasture	Spring Wheat	
	Sweet Corn	

